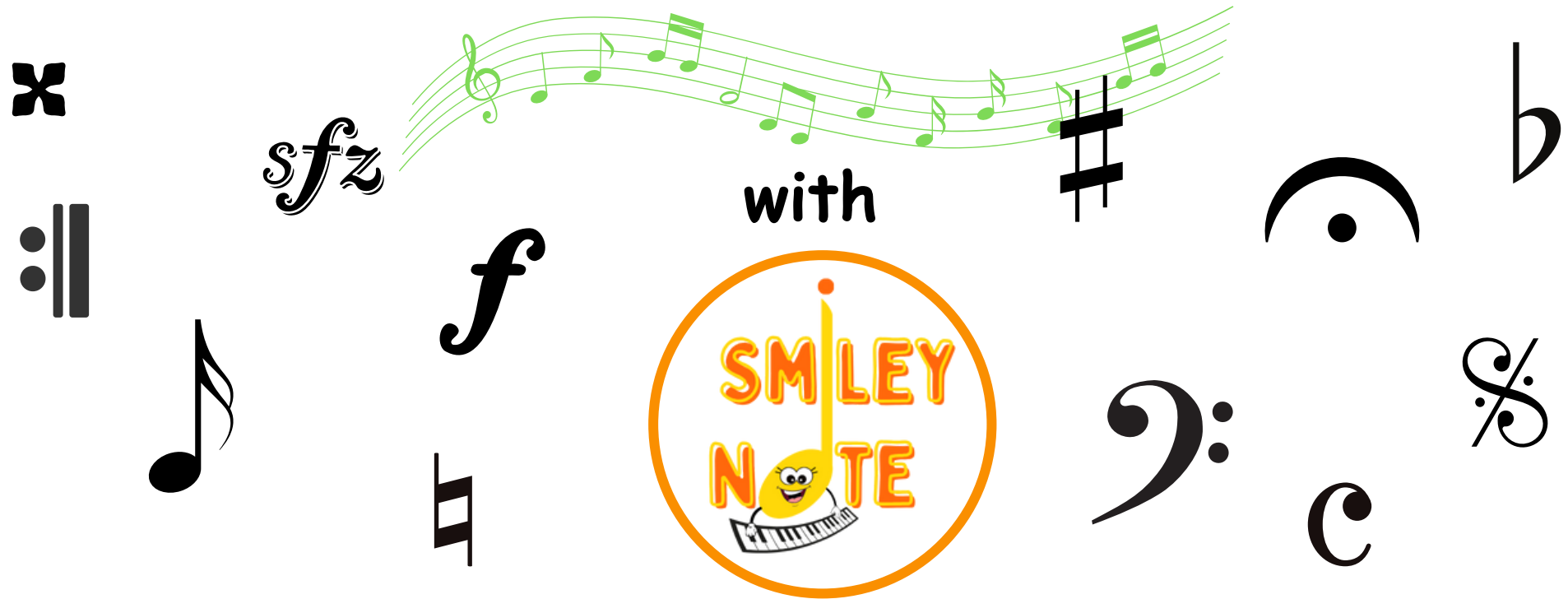


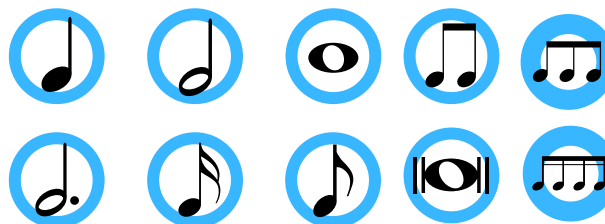
# MUSICAL SYMBOLS



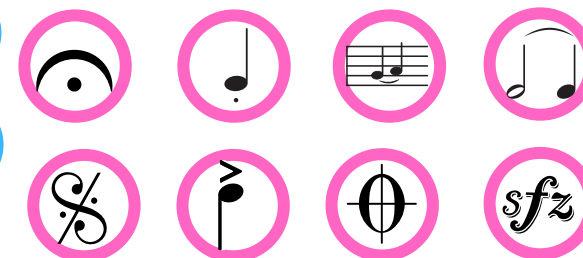
## Dynamics



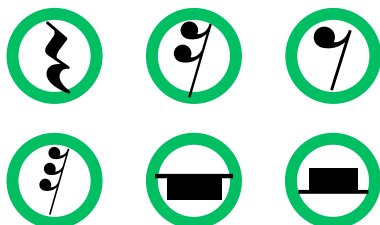
## Notes



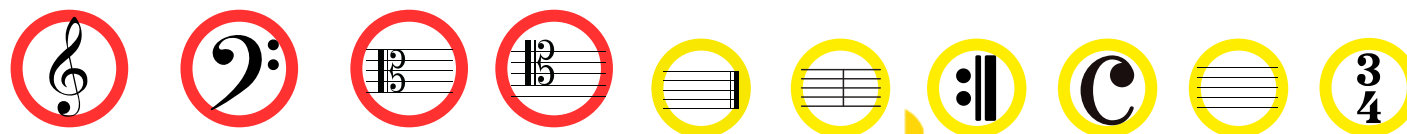
## Other Symbols



## Rests



## Clefs

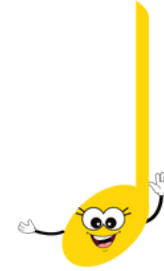


## Time and Measure

## Accidentals



# Dynamics



*p*

*pp*

*ppp*

*mp*



*f*

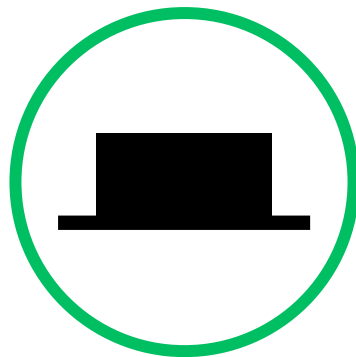
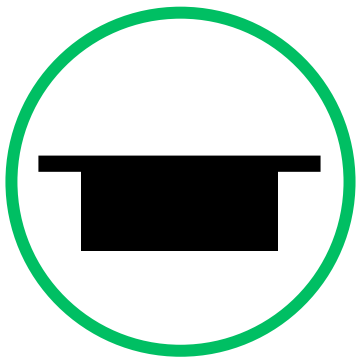
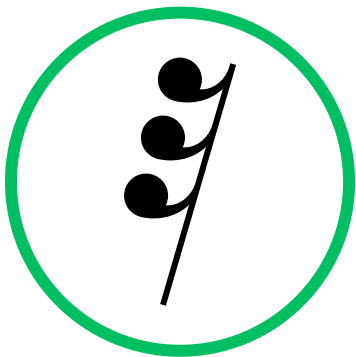
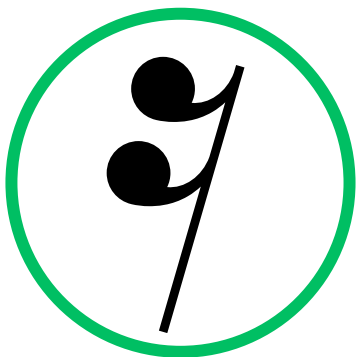
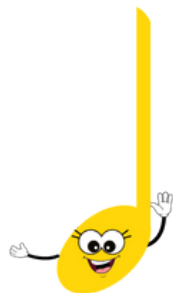
*ff*

*fff*

*mf*

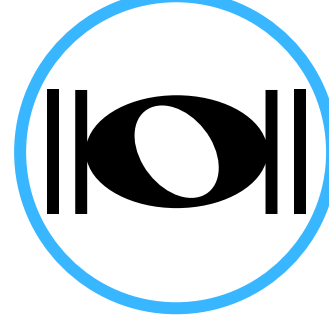
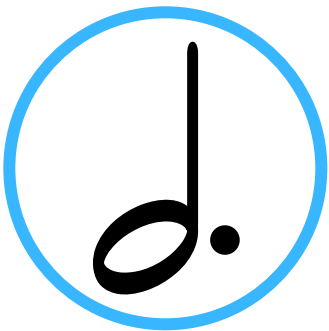
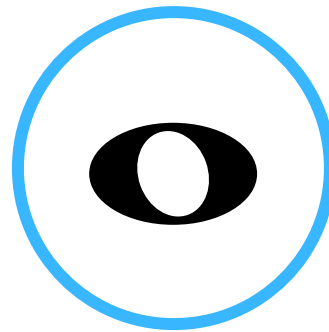
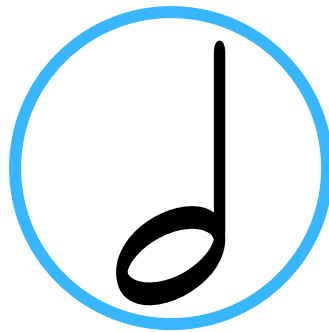
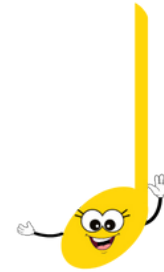


# Rests

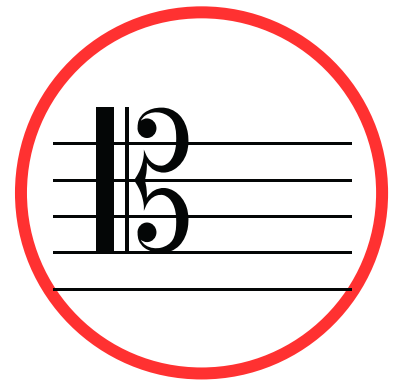
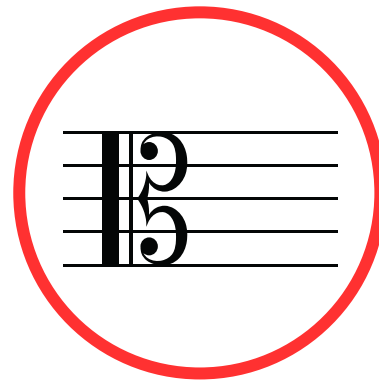




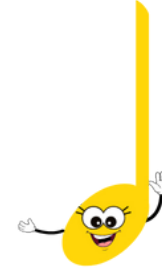
# Notes



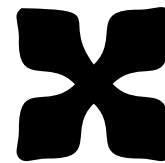
# Clefs



# Accidentals

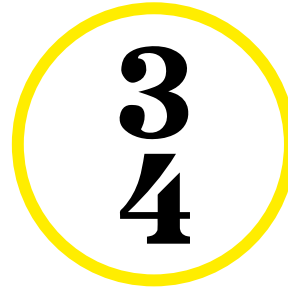
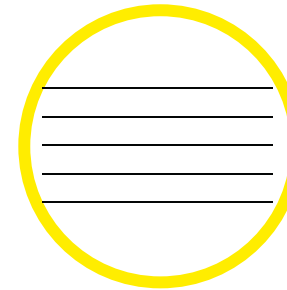
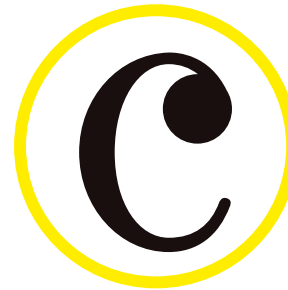
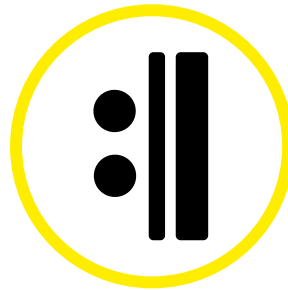
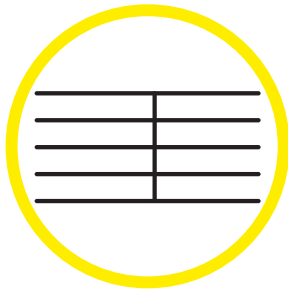
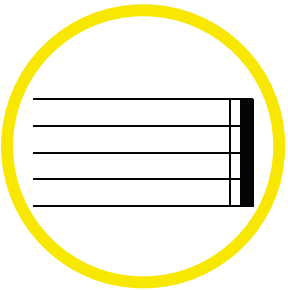
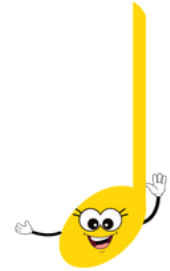


b

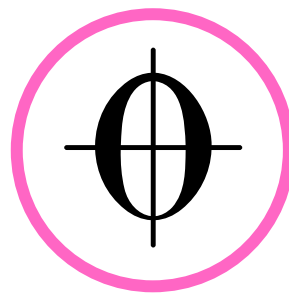
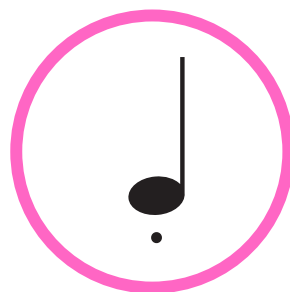
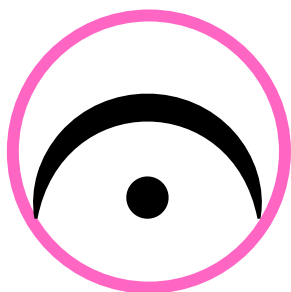


bb

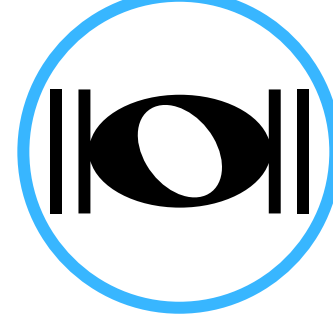
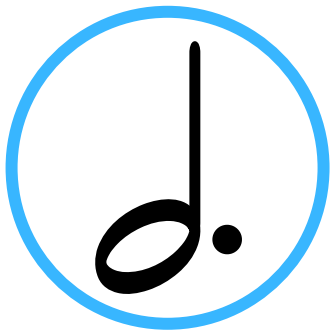
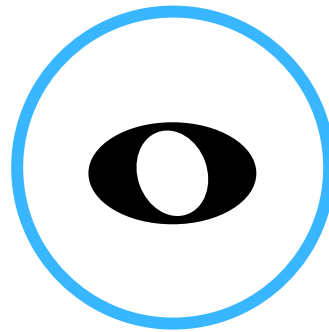
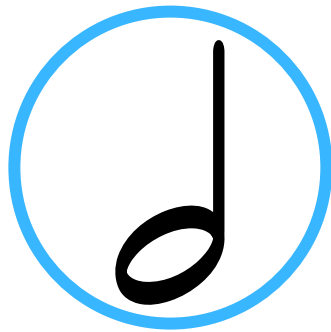
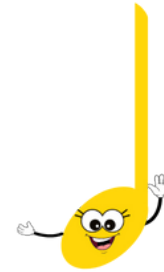
# Time and Measure



# Other Symbols



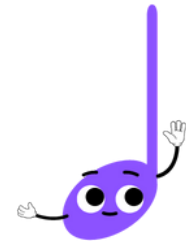
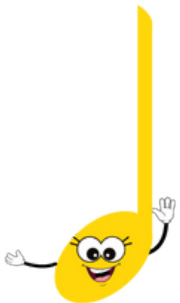
# Notes



# Notes

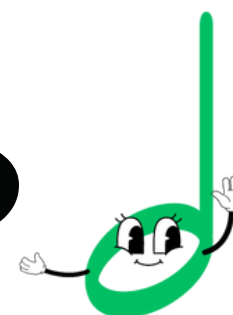
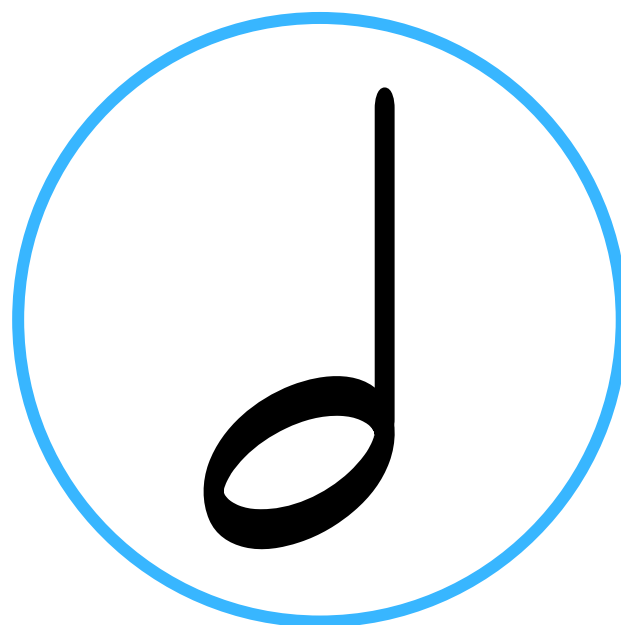
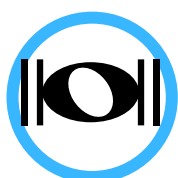


1



**crotchet/quarter note**

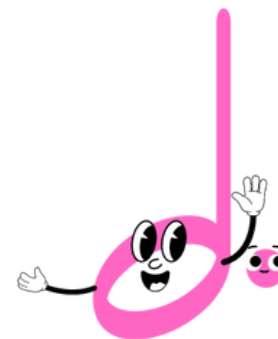
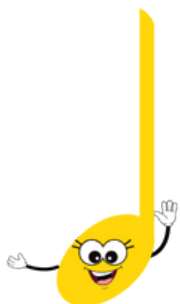
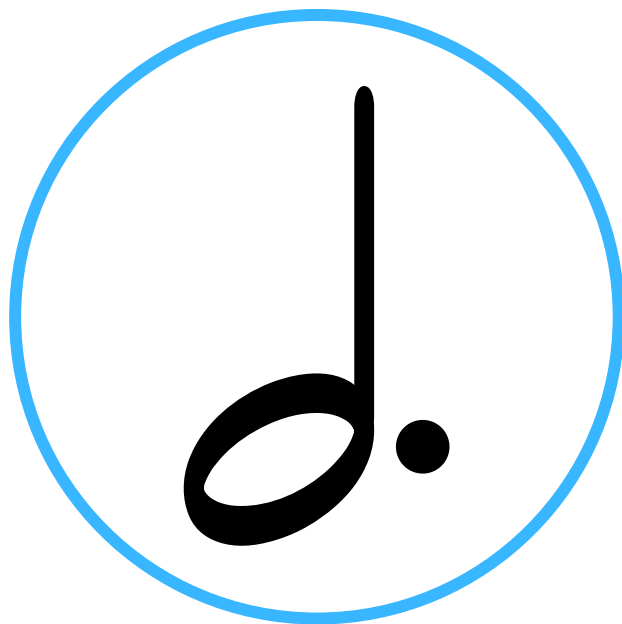
# Notes



minim/half note

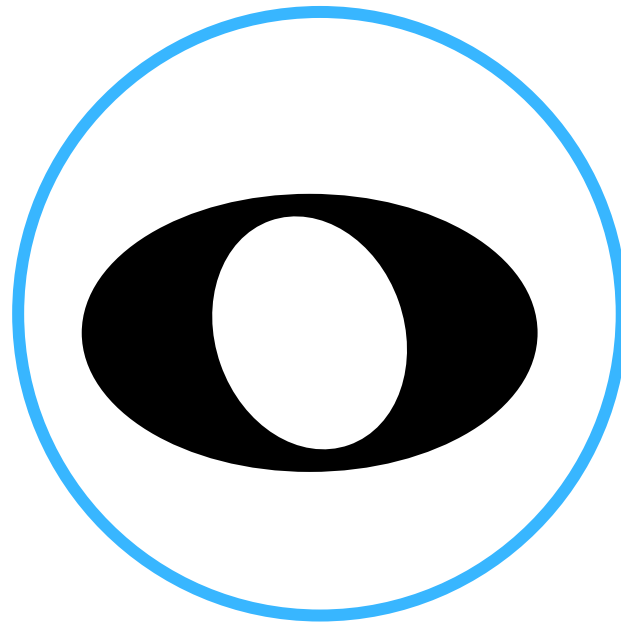
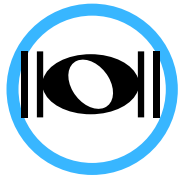


# Notes

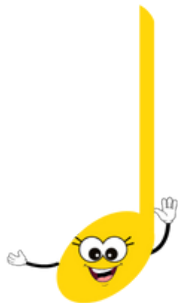


**dotted minim/dotted half note**

# Notes

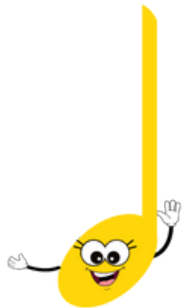
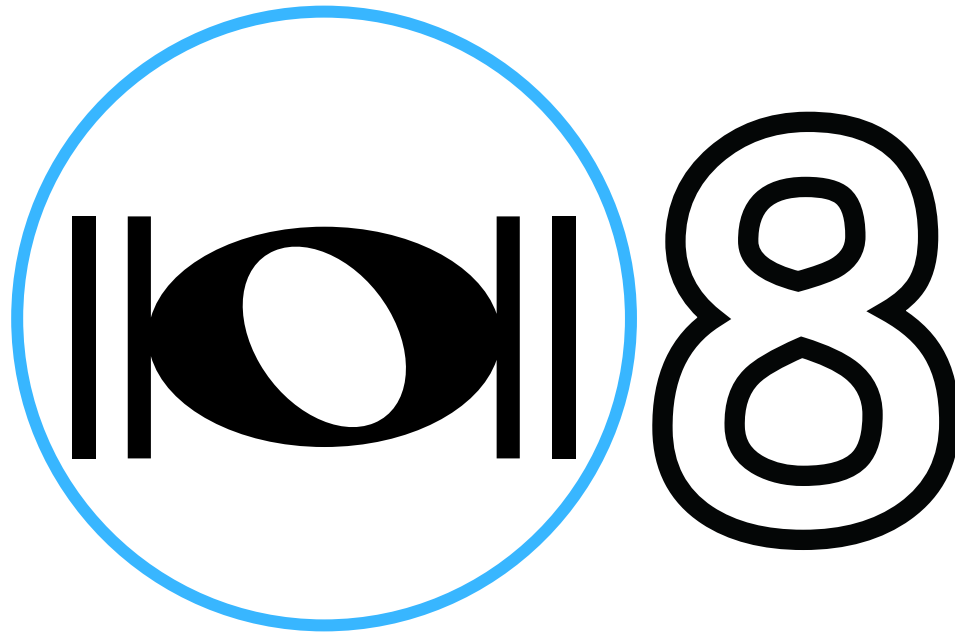


4



**semibreve/whole note**

# Notes

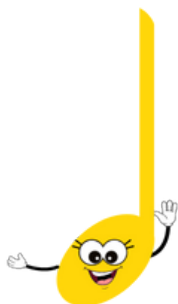


breve/double whole note

# Notes

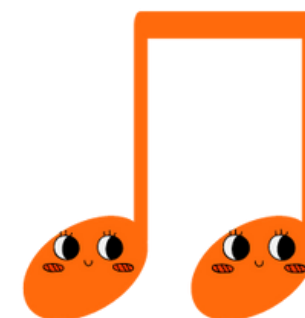
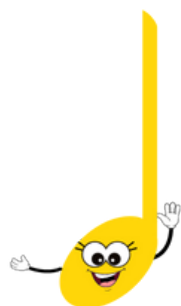


$\frac{1}{2}$   
HALF



quaver/eighth note

# Notes

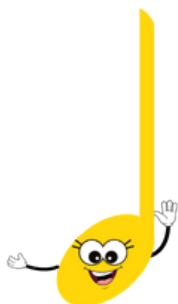


quavers/eighth notes

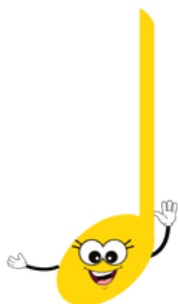
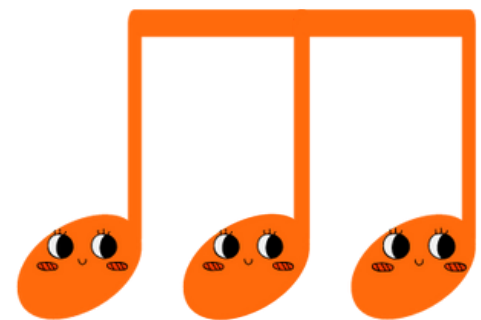
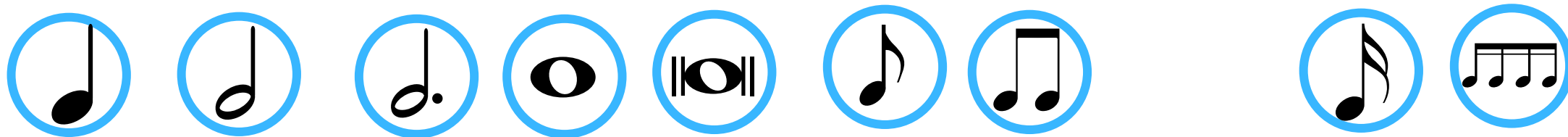
# Notes



ti - ti

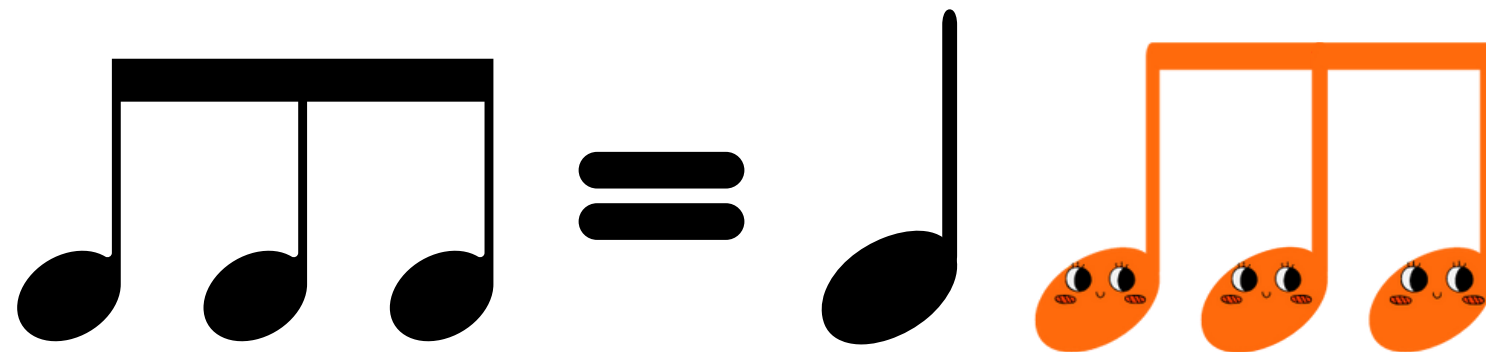
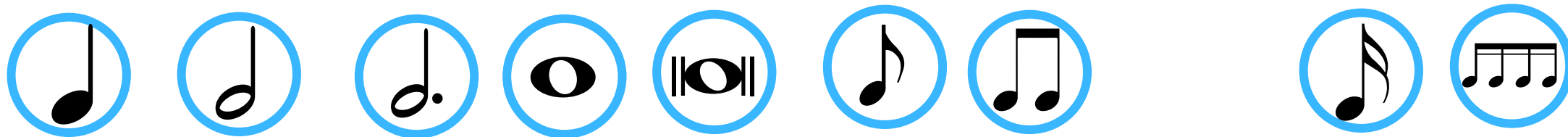


# Notes

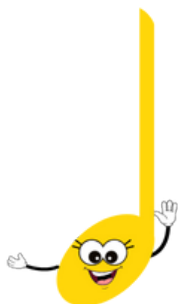


**eighth notes triplets**

# Notes

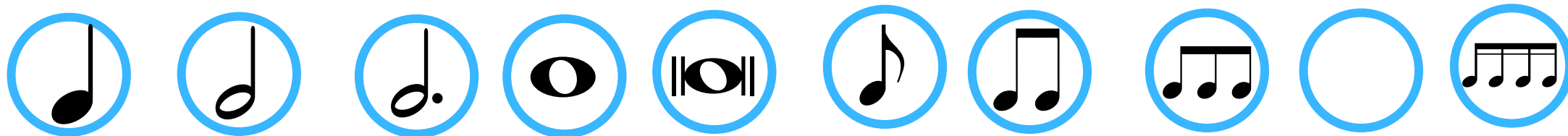


tri - pa - let

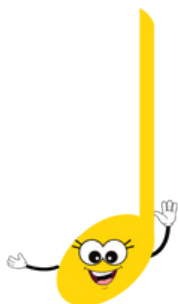




# Notes

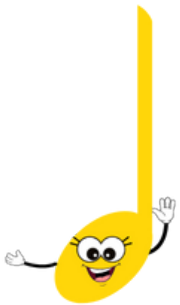
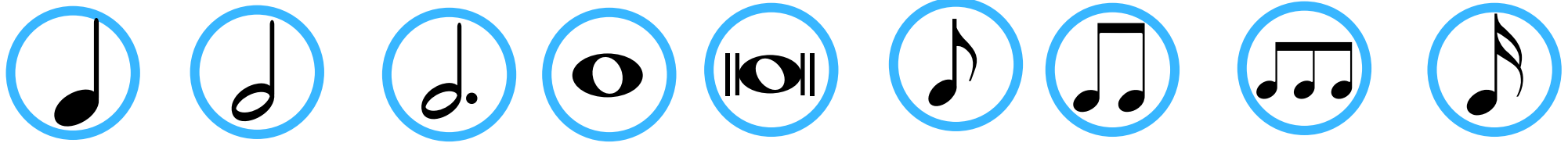


$1/4$



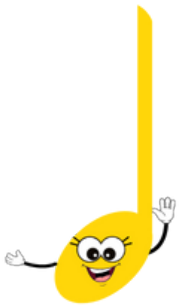
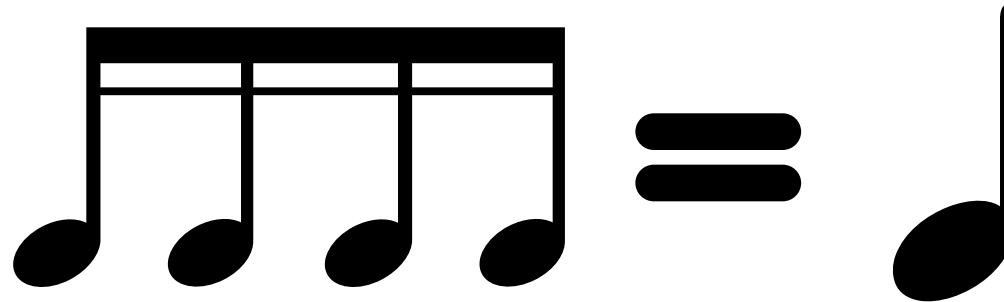
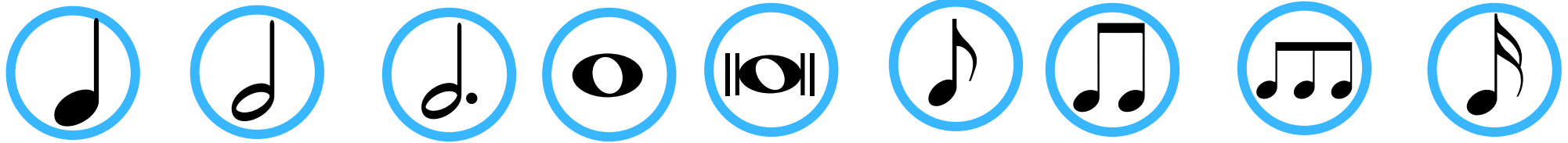
**semiquaver/sixteenth Note**

# Notes



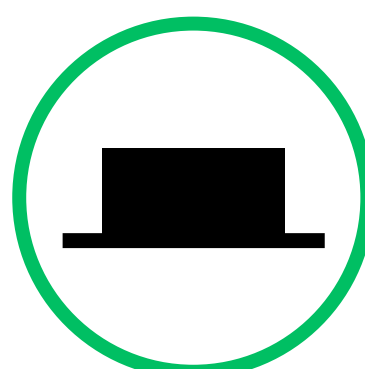
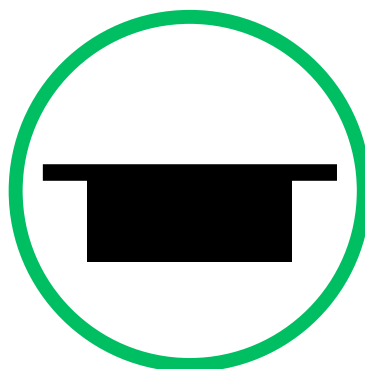
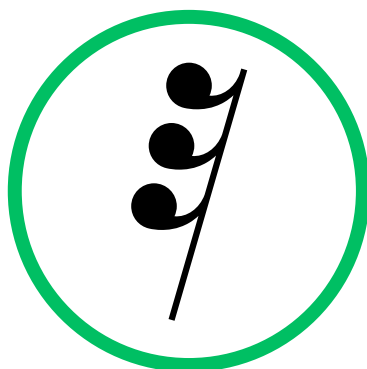
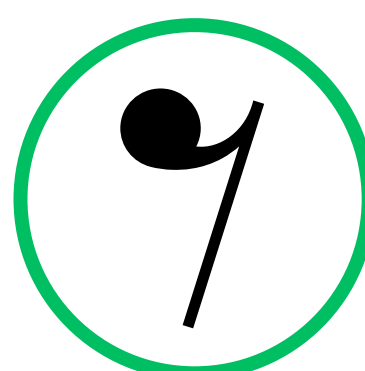
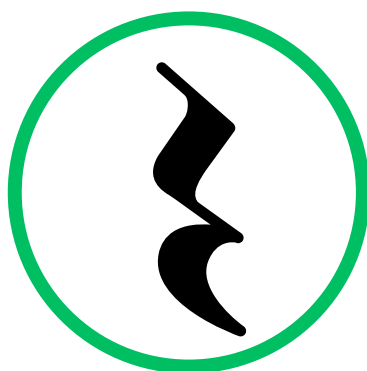
**semiquavers/sixteenth notes**

# Notes



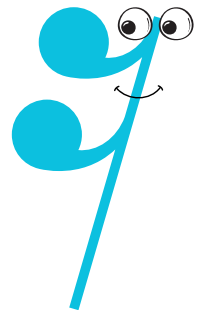
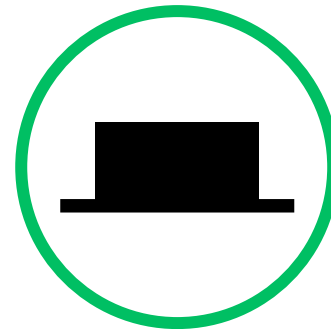
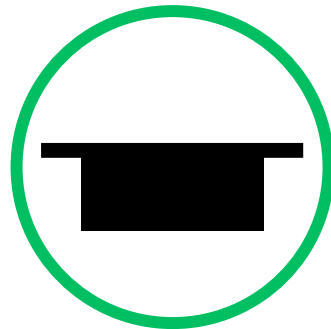
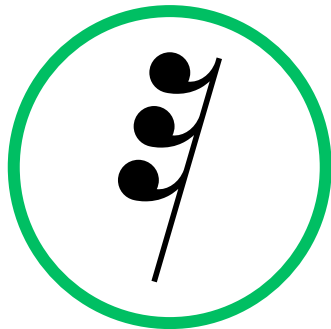
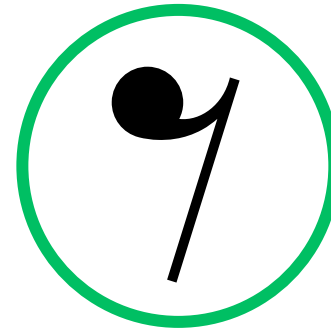
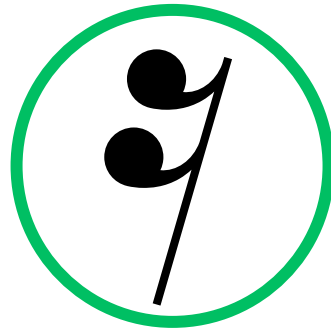
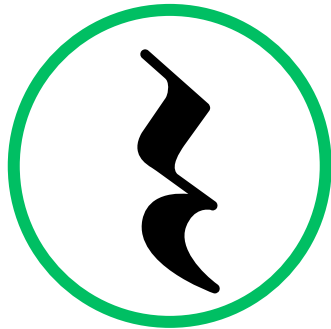
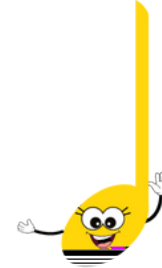
**semiquavers/sixteenth notes**

# Rests



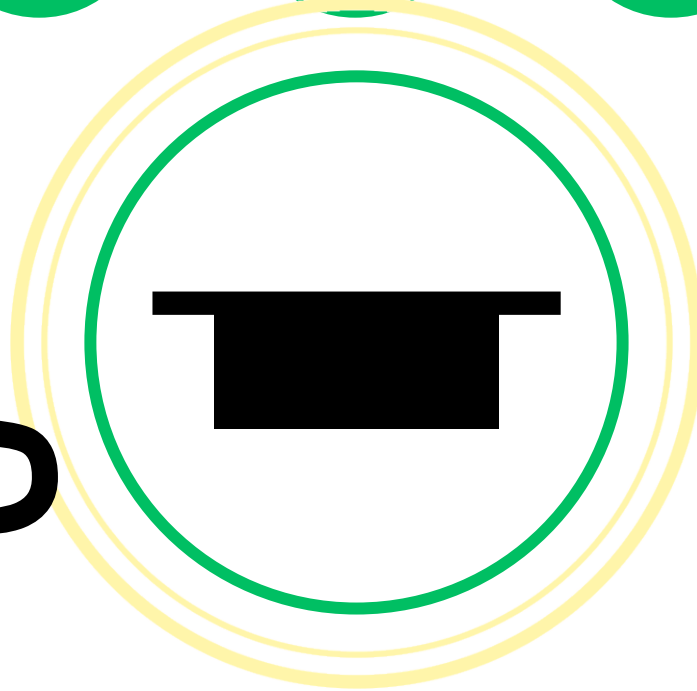
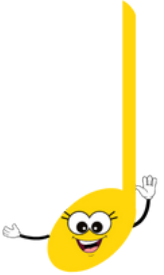
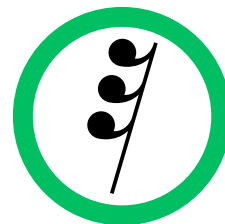
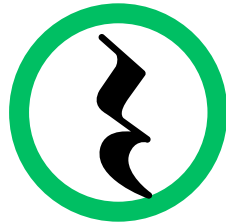
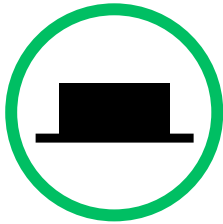


# Rests

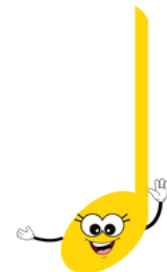
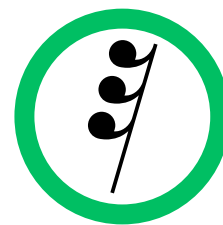
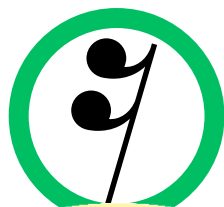
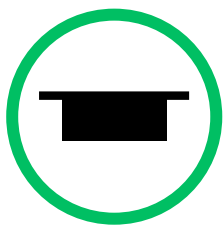




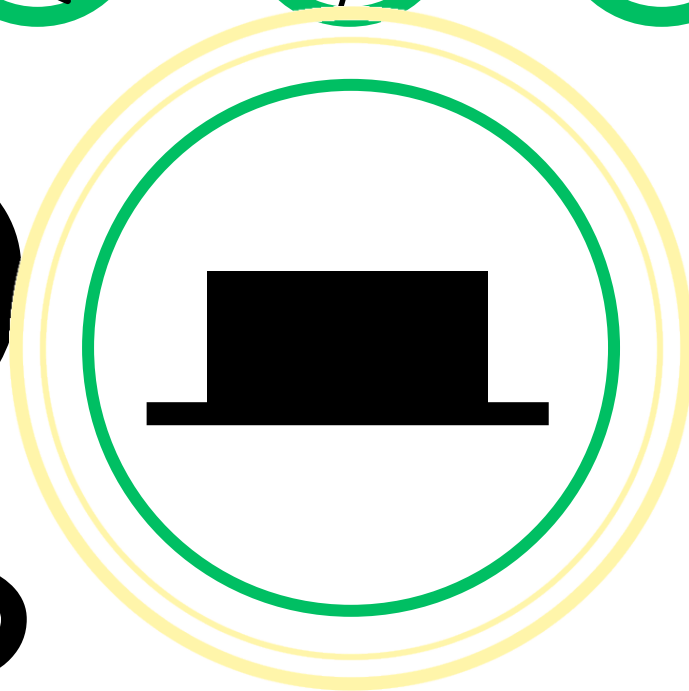
4



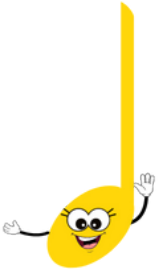
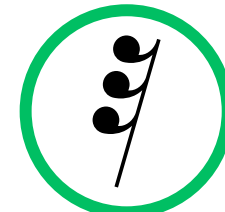
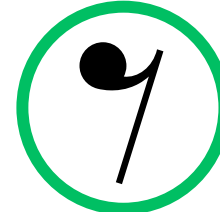
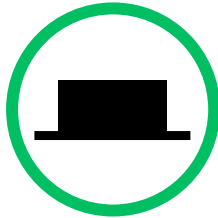
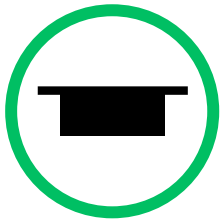
semibreve rest/ whole rest



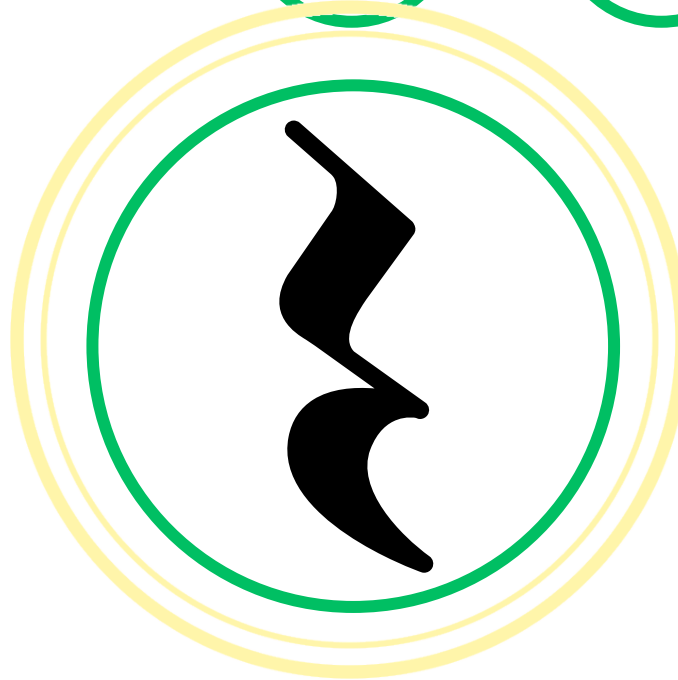
2



minim rest/ half rest

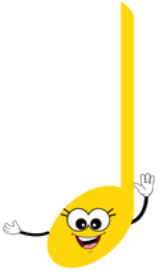
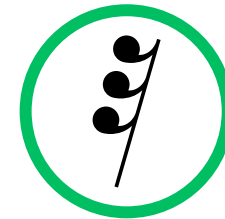
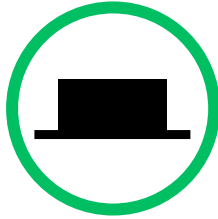
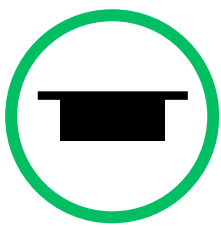


1

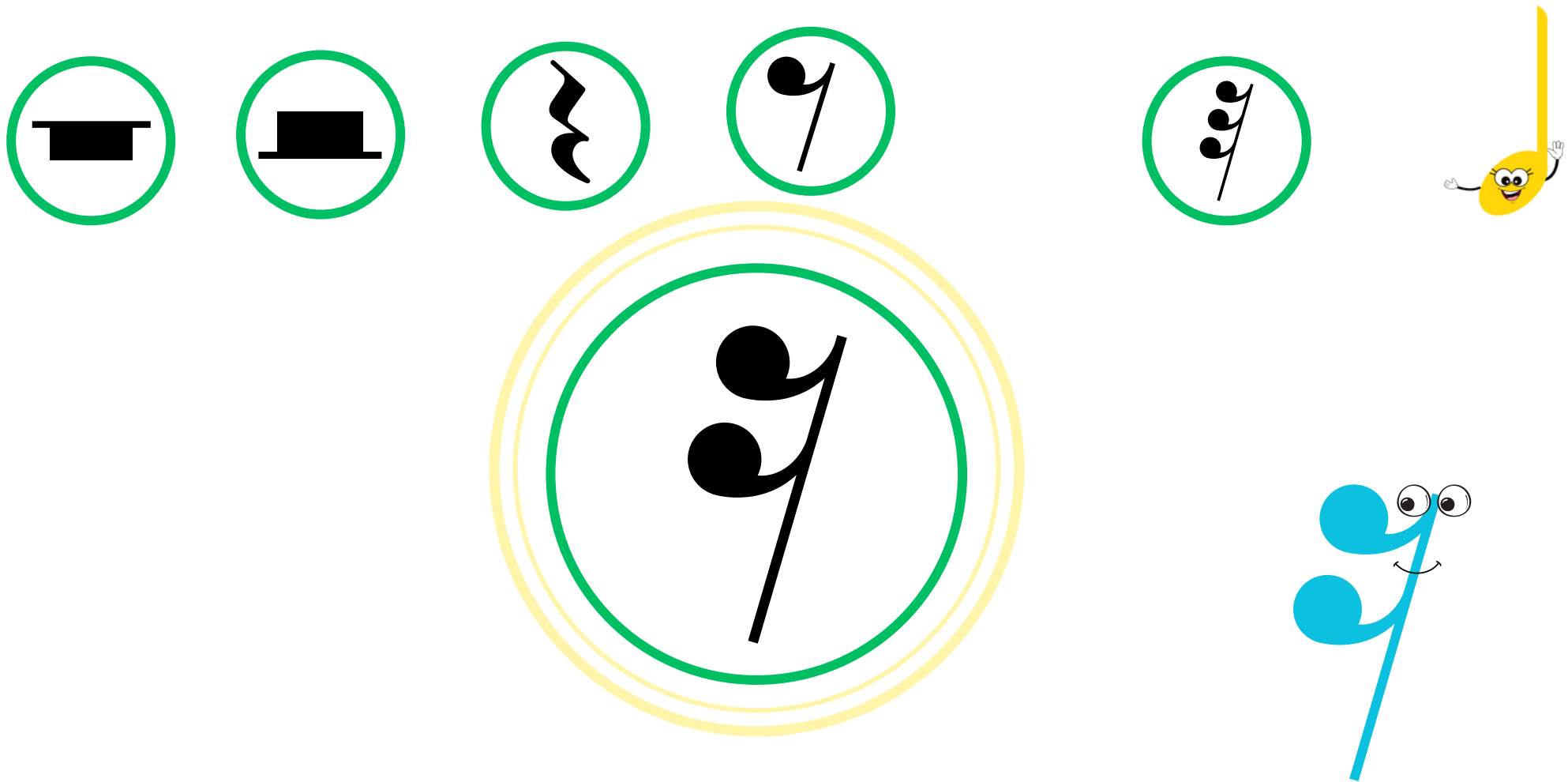


crotchet rest/ quarter rest

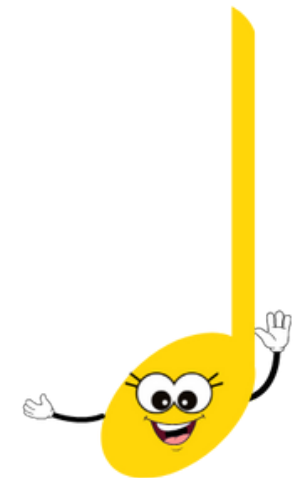
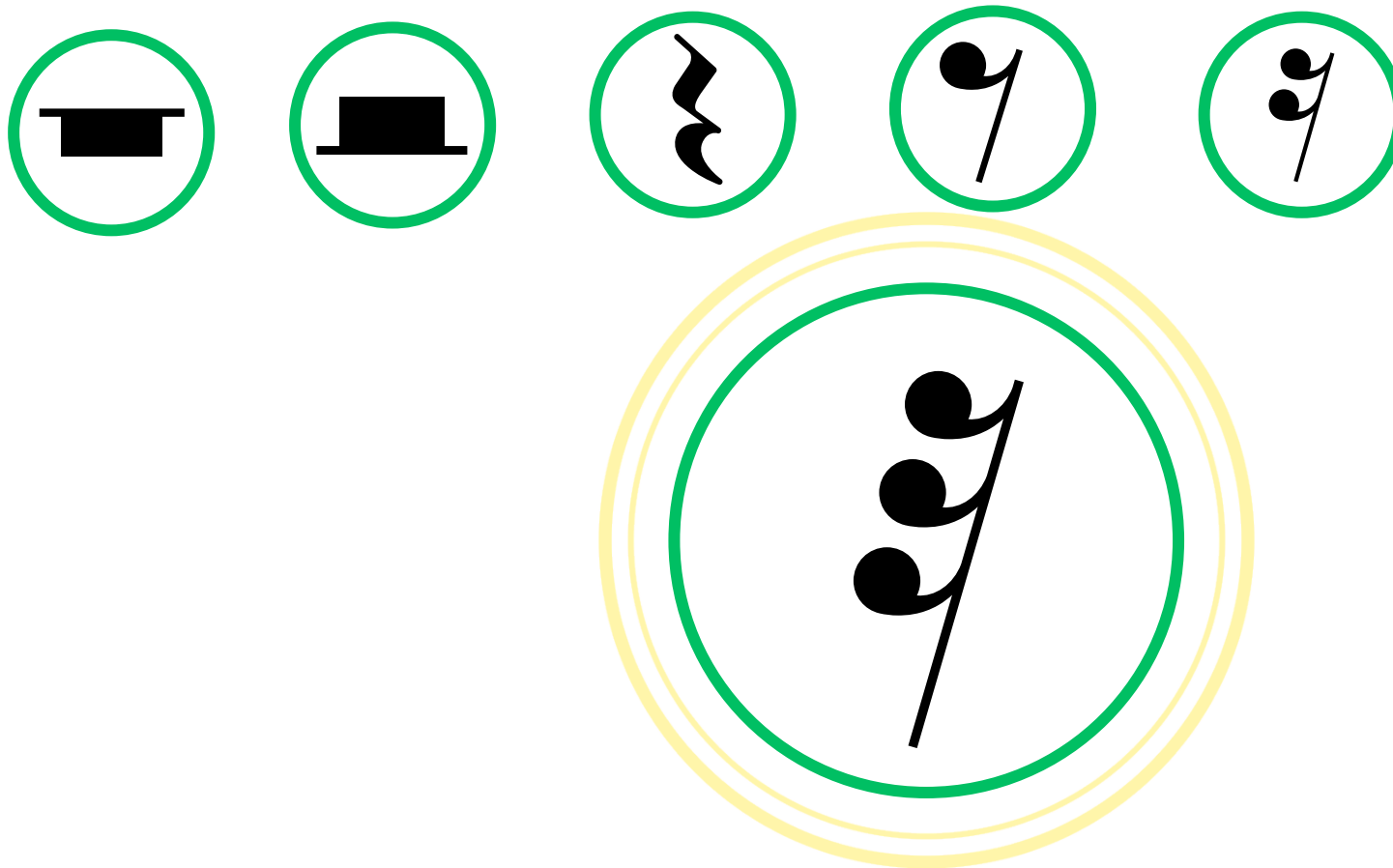




quaver rest/ eighth rest



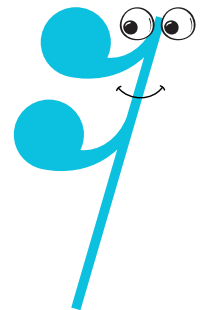
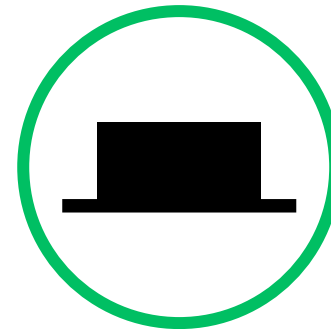
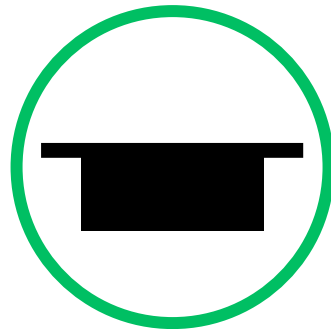
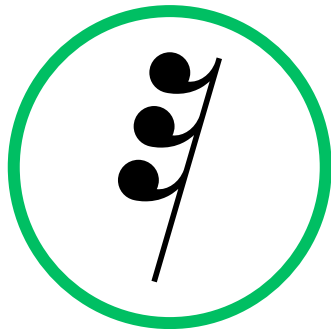
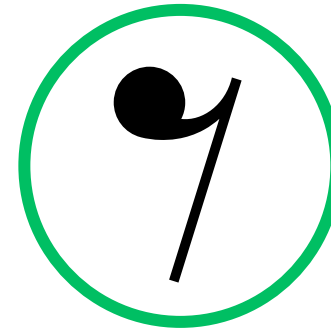
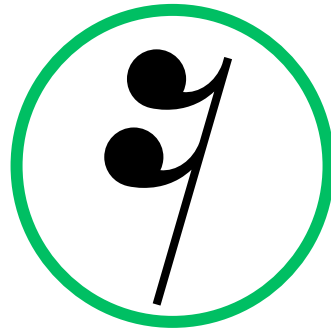
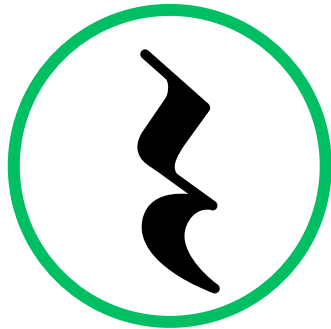
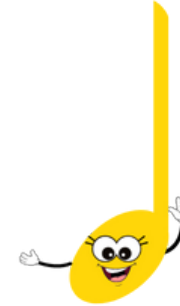
semiquaver rest/ sixteenth rest



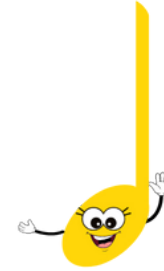
demisemiquaver rest / 32nd note rest



# Rests



# Dynamics



*ppp*

*pp*

*p*

*mp*



*mf*

*f*

*ff*

*fff*



?

?

?

?

?

?

?

?

*ppp*

*pp*

*p*

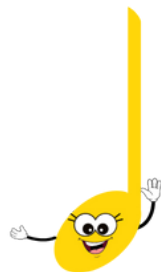
*mp*

*mf*

*f*

*ff*

*fff*



*fff*

*ff*

*f*

*mf*

*mp*

*p*

*pp*

*ppp*

*pp*

*p*

*mp*

*mf*

*f*

*ff*

*fff*

*ppp*



**Pianississimo**



*ppp*

*p*

*mp*

*mf*

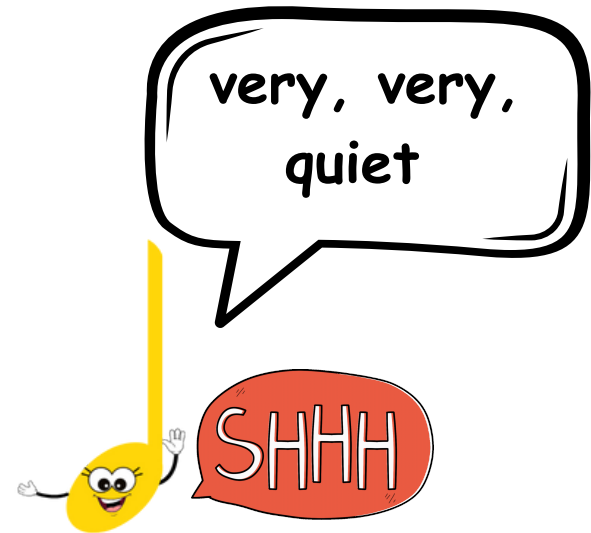
*f*

*ff*

*fff*

*pp*

**Pianissimo**





*ppp*

*pp*

*mp*

*mf*

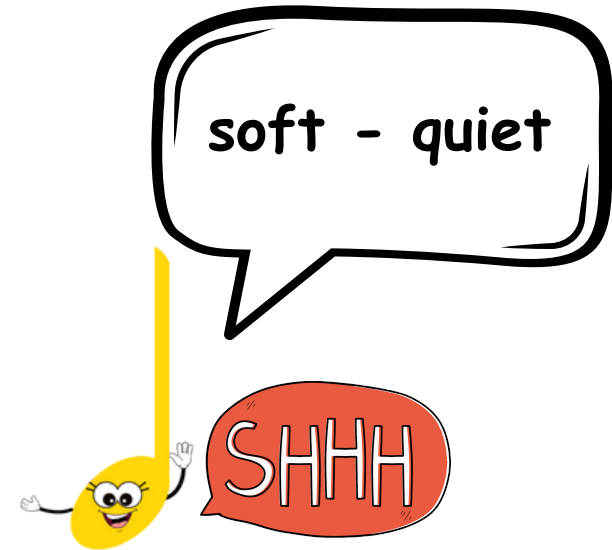
*f*

*ff*

*fff*

*p*

**Piano**



*ppp*

*pp*

*p*

*mf*

*f*

*ff*

*fff*

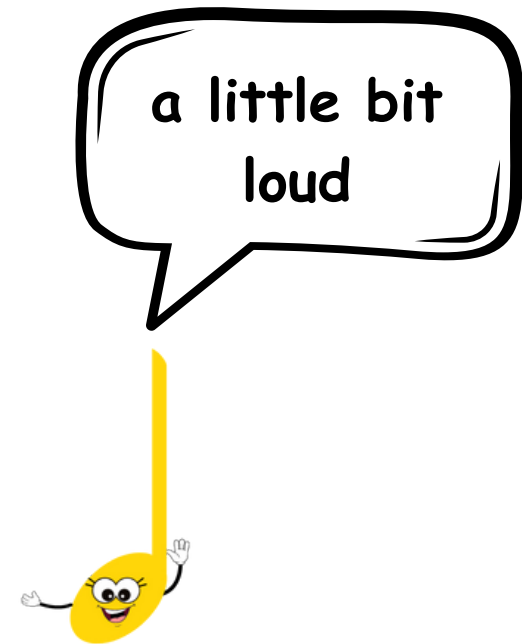
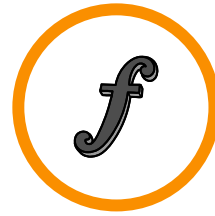
*mp*

a little bit  
quiet



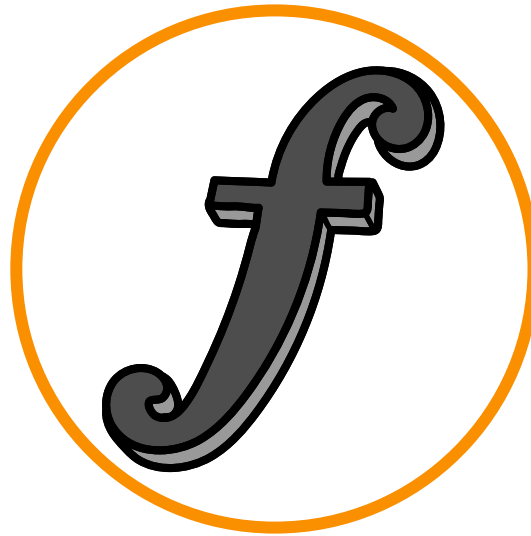
**Mezzo Piano**



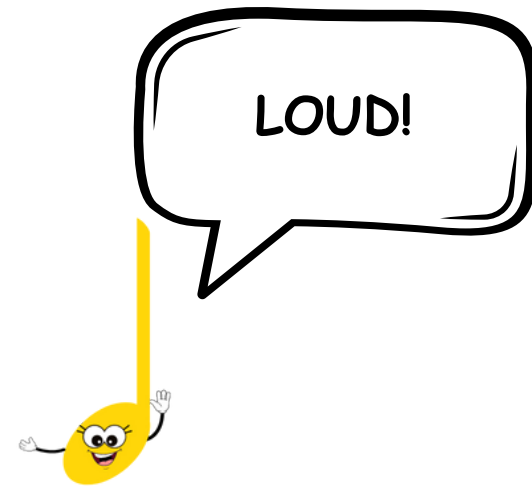
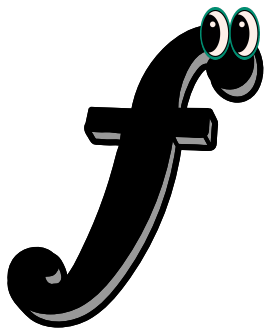


**Mezzo Forte**



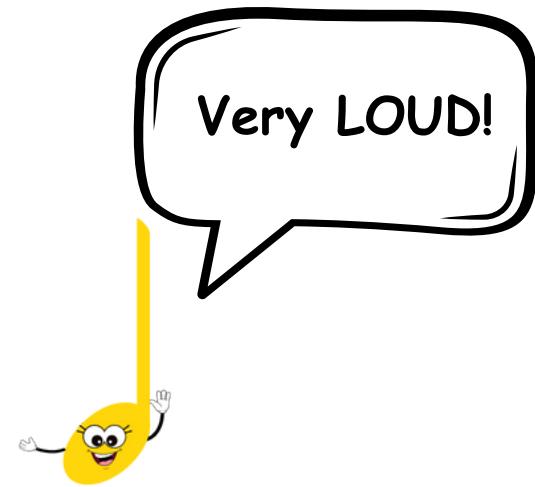


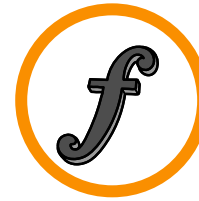
**Forte**



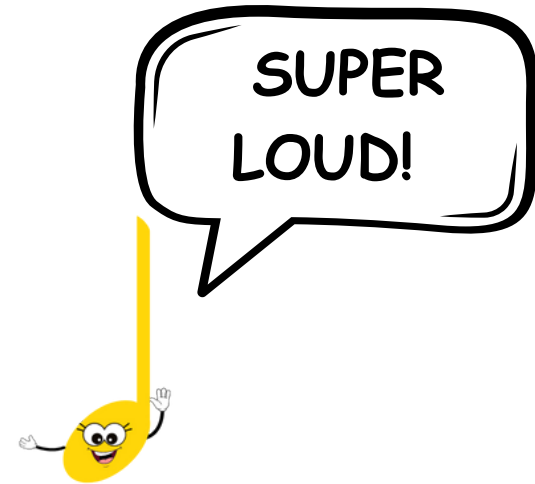
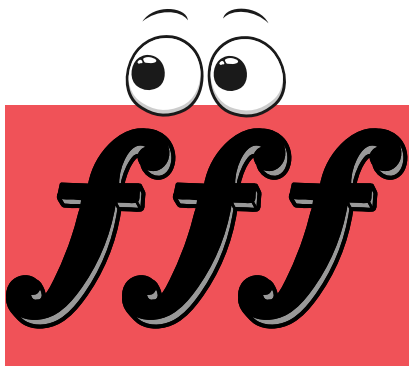


**Fortissimo**

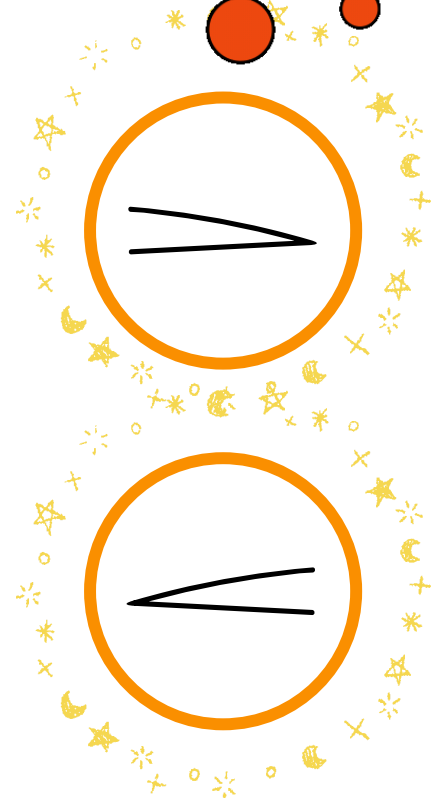
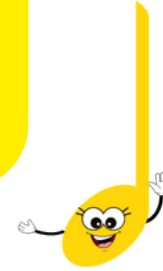




**Fortississimo**



# Dynamics



*p*

*pp*

*ppp*

*mp*

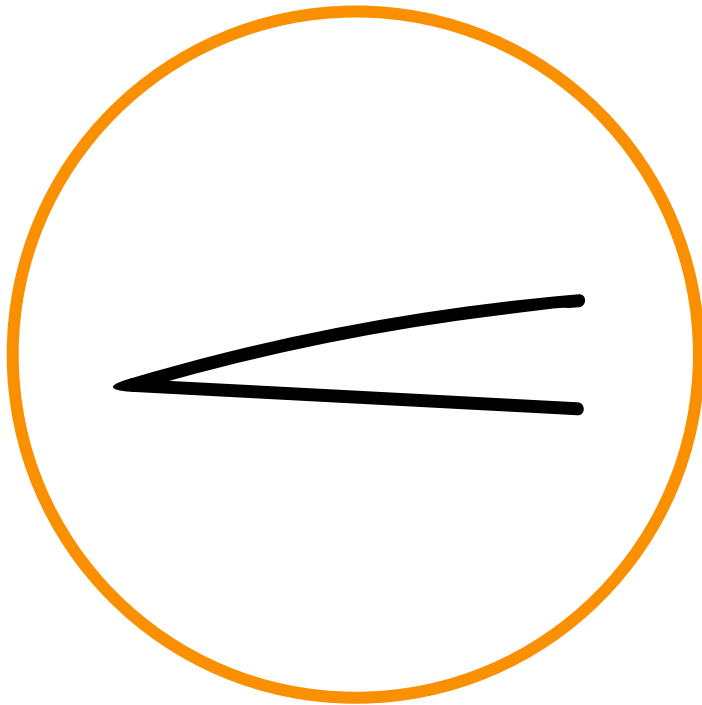
*fff*

*ff*

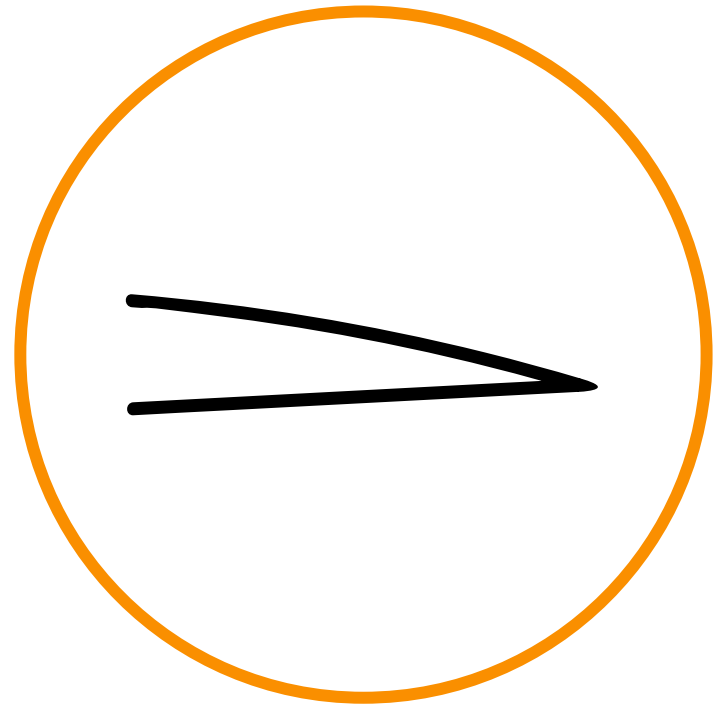
*f*

*mf*

# Crescendo



# Diminuendo





*ppp*

*pp*

*p*

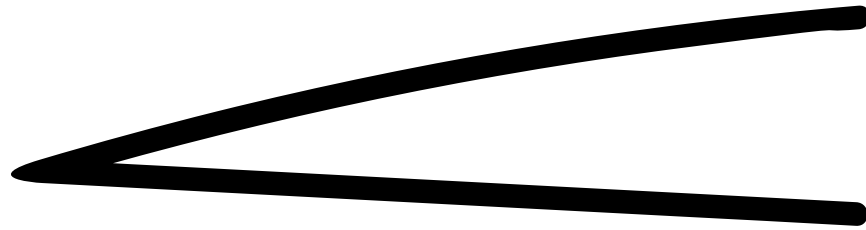
*mp*

*mf*

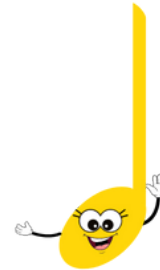
*f*

*ff*

*fff*



**Crescendo**



Start quiet,  
then get louder

*ppp*

*pp*

*p*

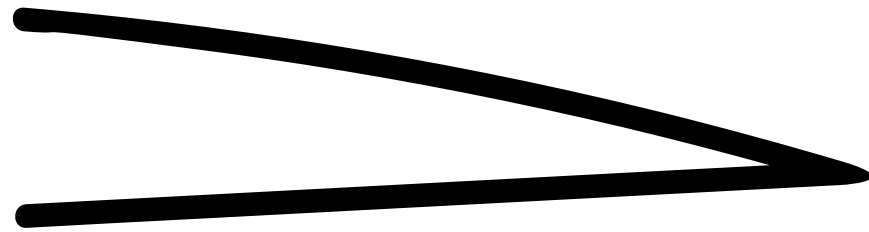
*mp*

*mf*

*f*

*ff*

*fff*

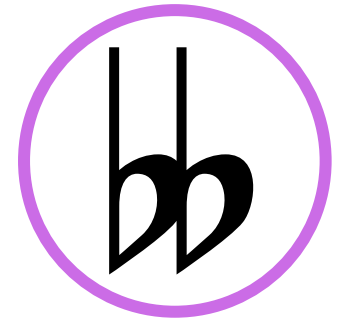
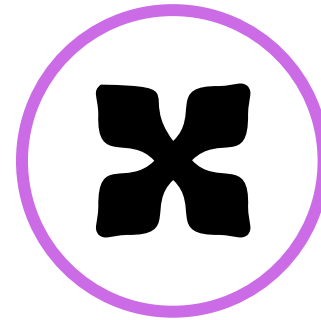
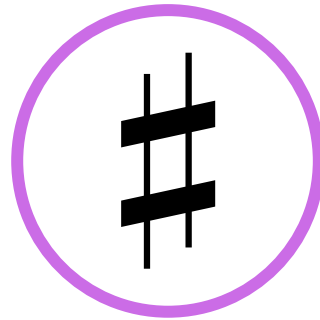
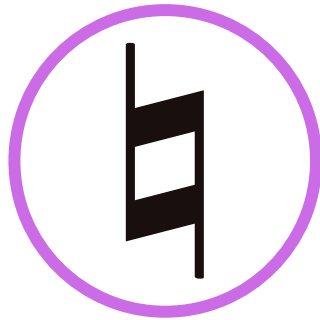
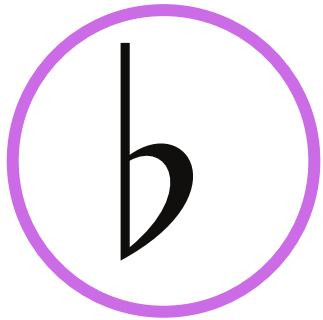
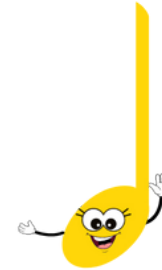


**Diminuendo**



Start loud, then  
get softer

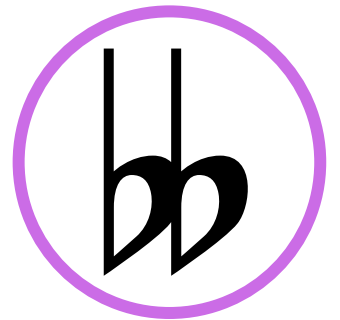
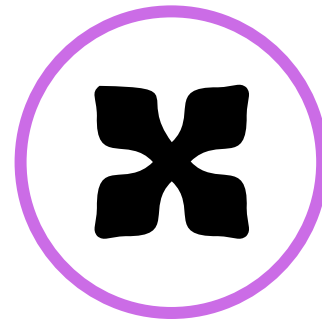
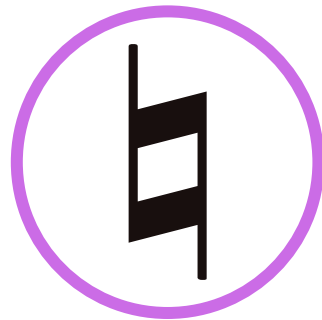
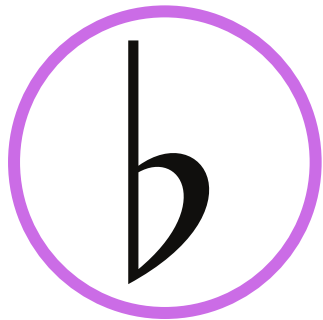
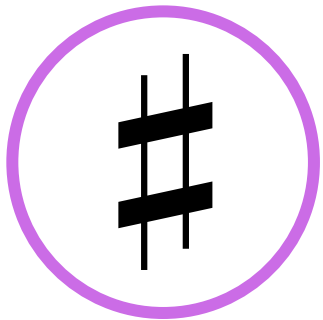
# Accidentals



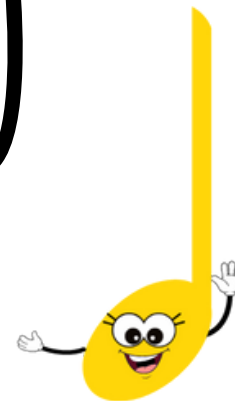
Watch the  
video!

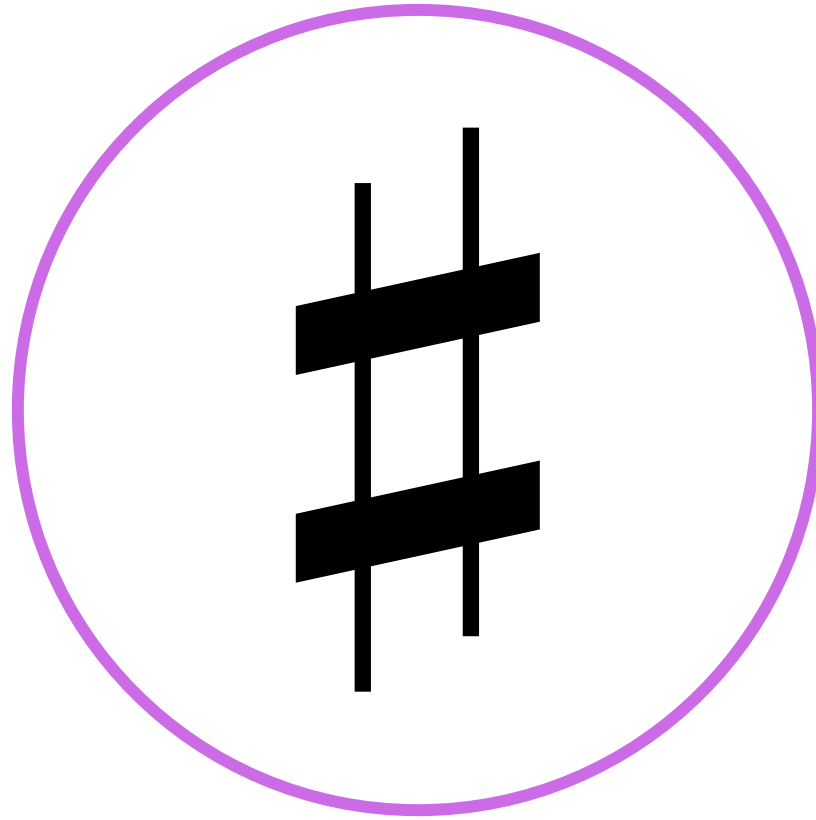


# Accidentals

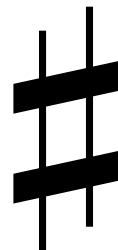
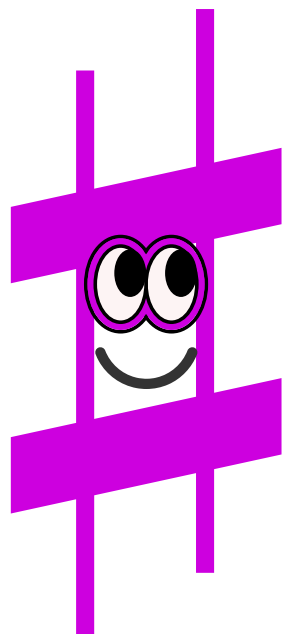


Accidentals are little signs  
that change a note.  
They make the note go up or  
down by half a tone or a  
whole tone.

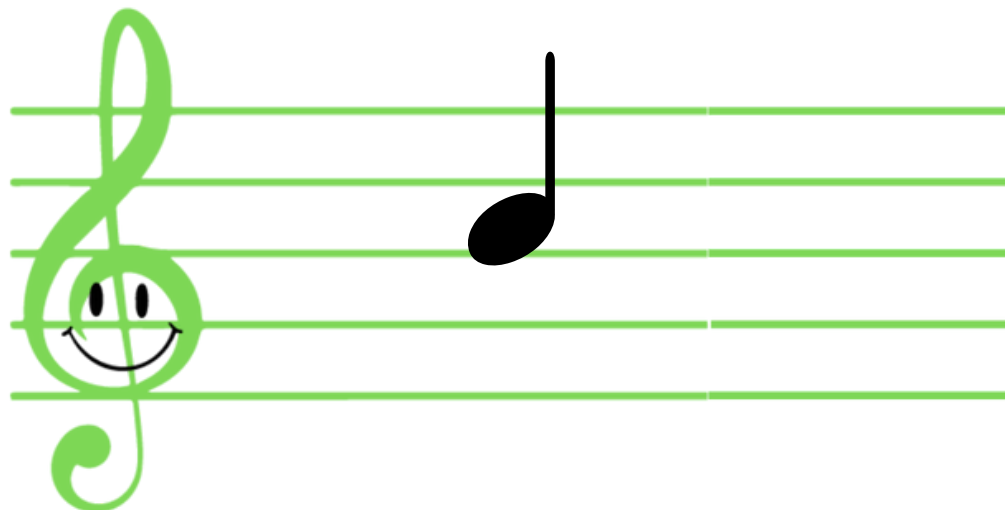




**sharp**

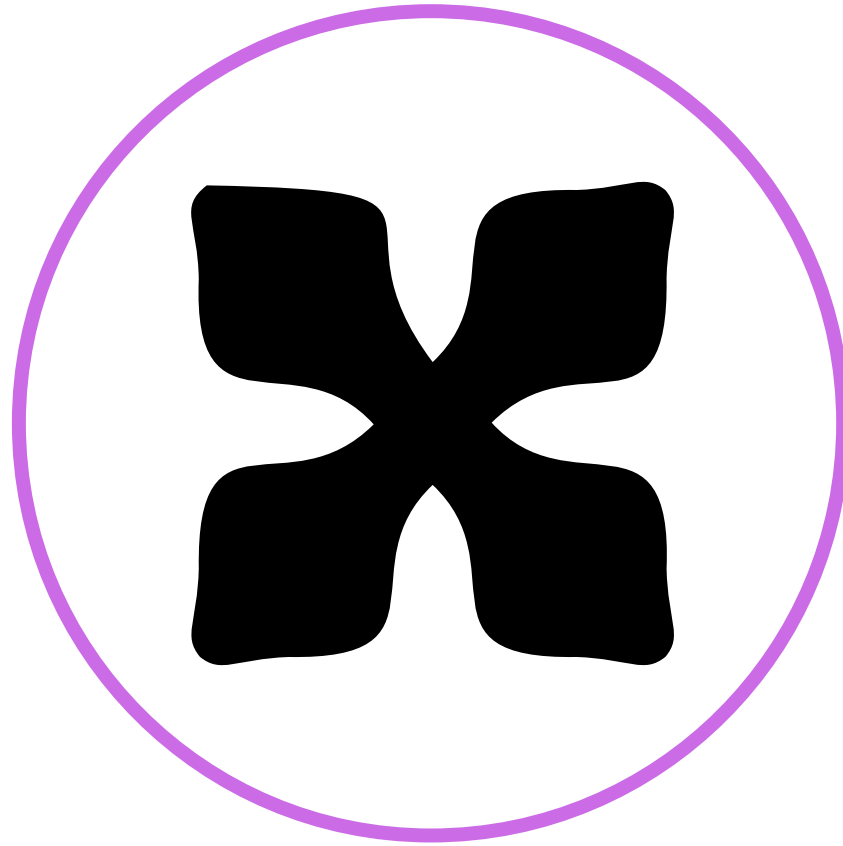


Sharp  
raises a note by half  
a tone- a fine step up  
- the note goes a  
little higher

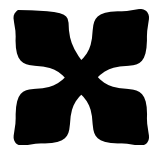
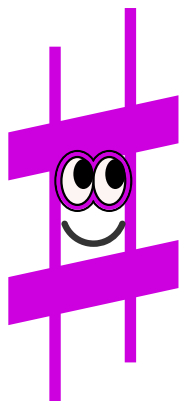


**sharp**

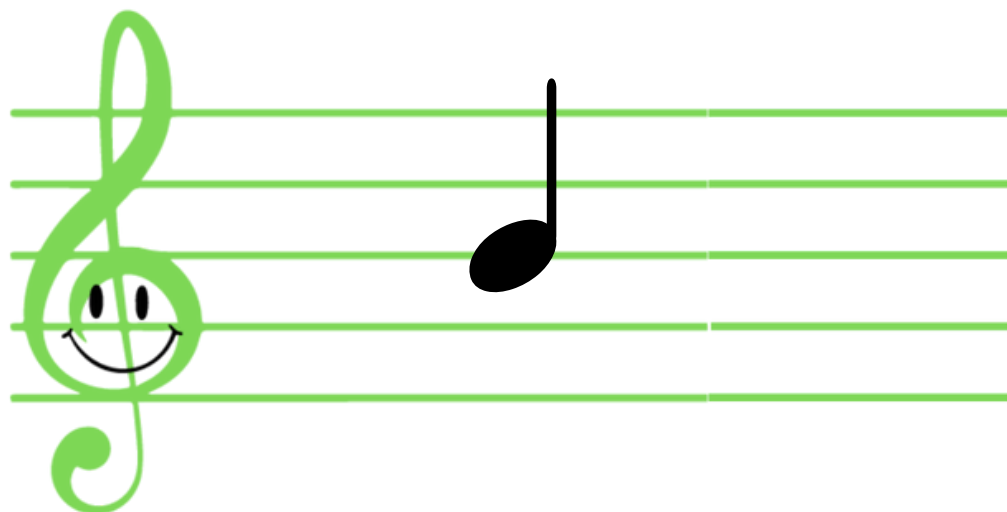




**double sharp**

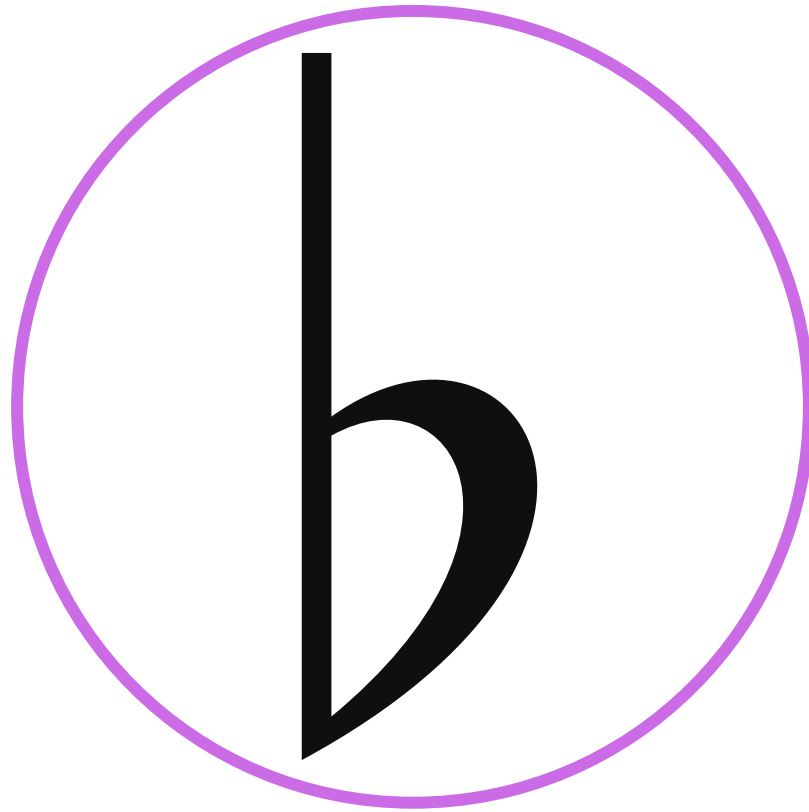


Double Sharp  
Raises a note by a whole  
tone (2 half steps)  
It goes higher by 2 steps



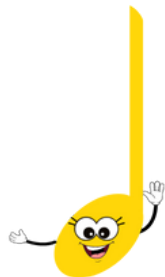
**double sharp**



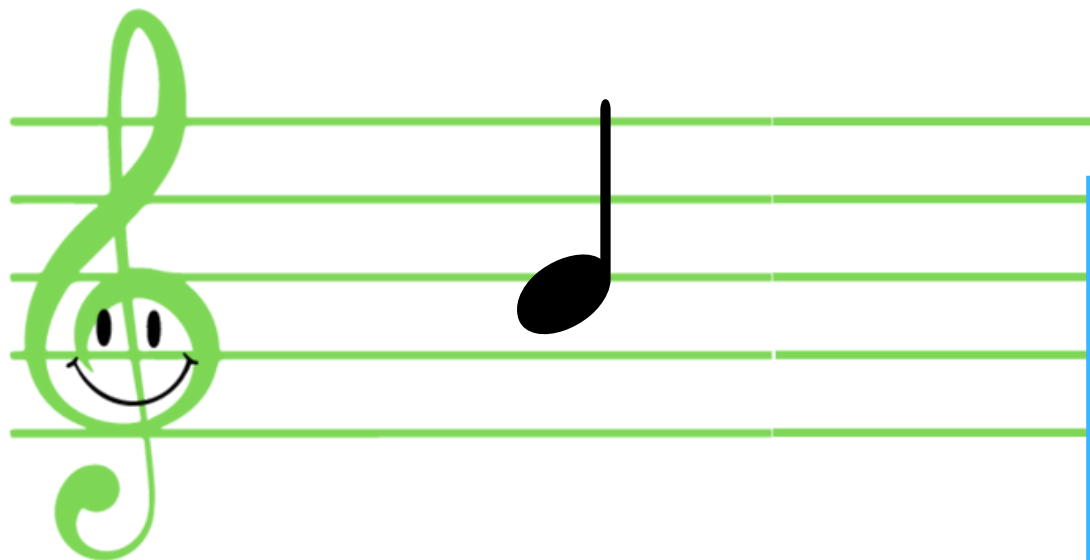


**flat**

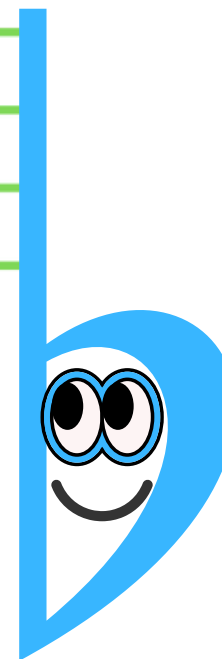
Flat  
Lowers a note by half a  
tone  
It goes a little lower



b



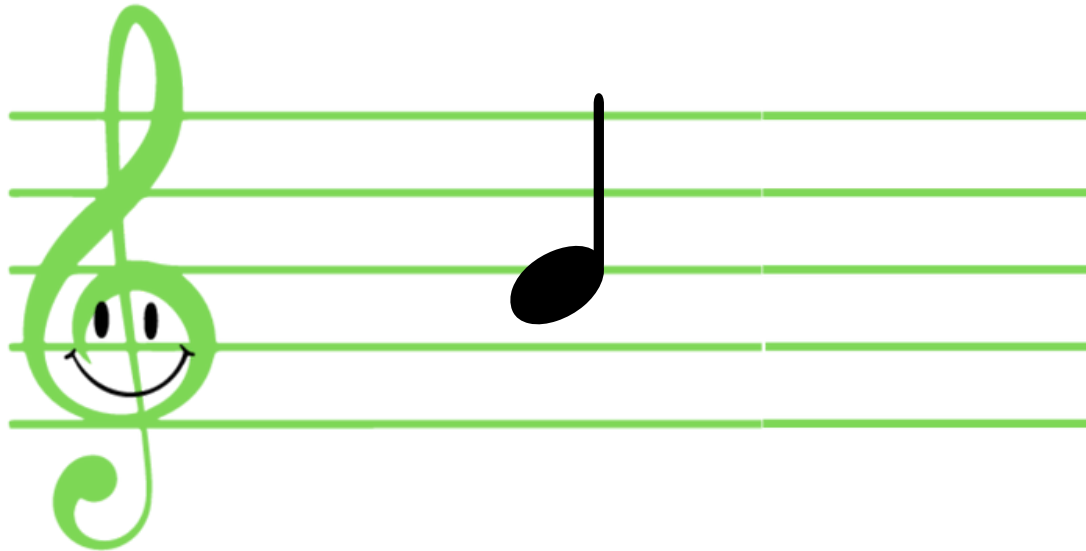
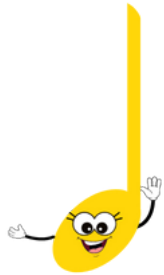
flat



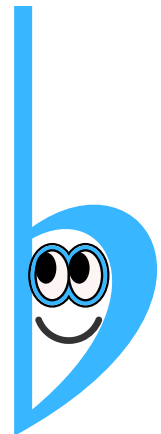


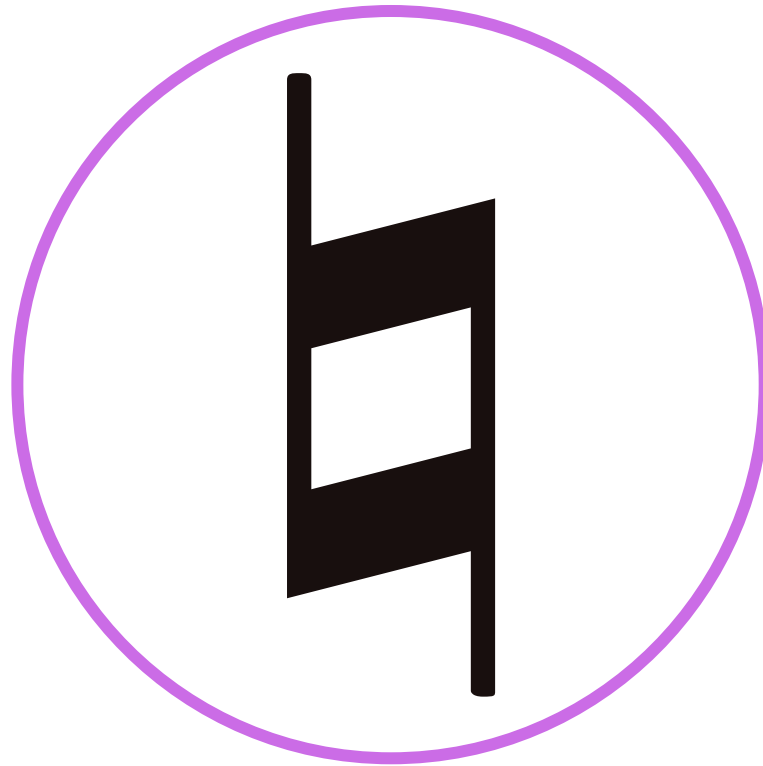
**double flat**

**Double Flat**  
Lowers a note by a whole  
tone (2 half steps)  
It goes lower by 2 steps

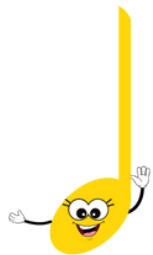


**double flat**

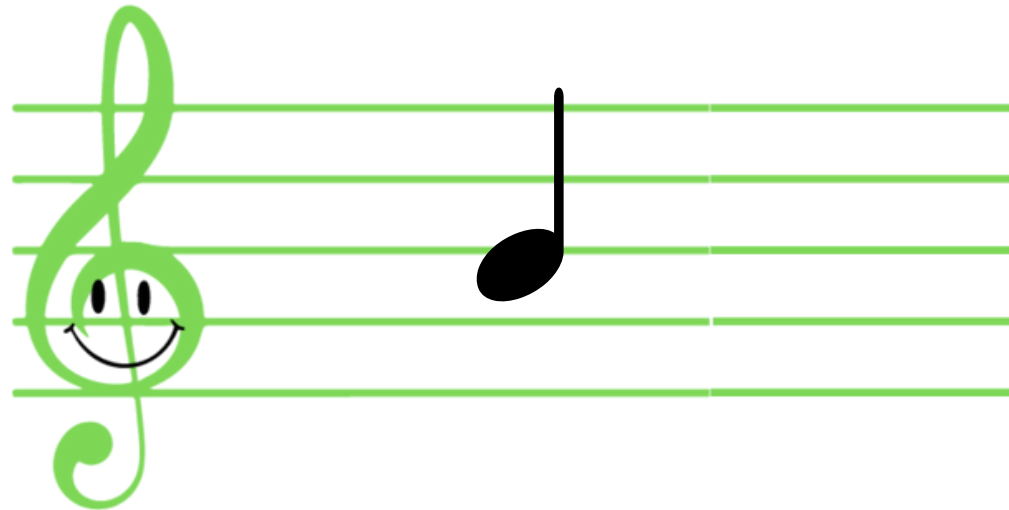




**natural**



Natural  
Cancels any sharp or flat  
— back to normal  
Play the original note  
again!

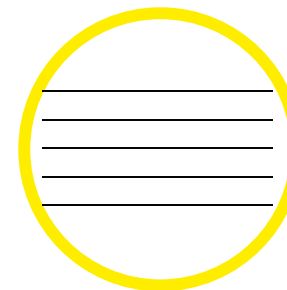
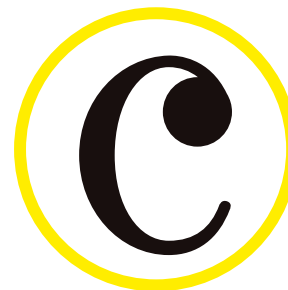
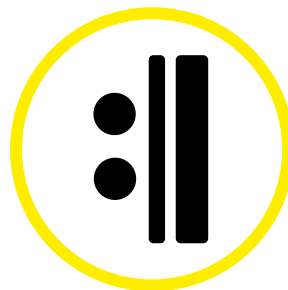
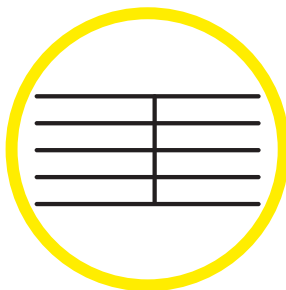
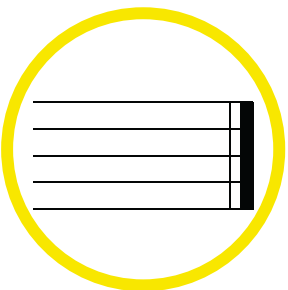


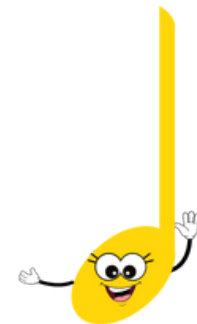
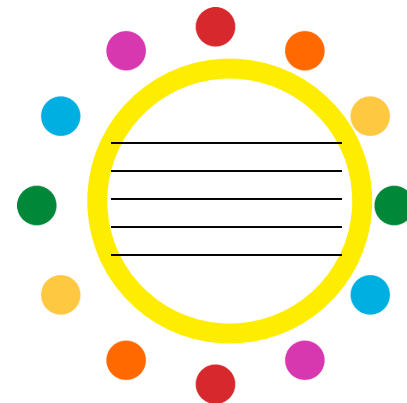
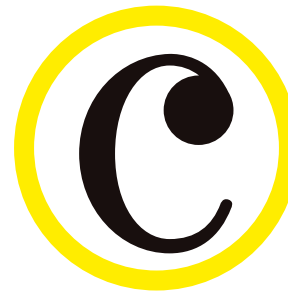
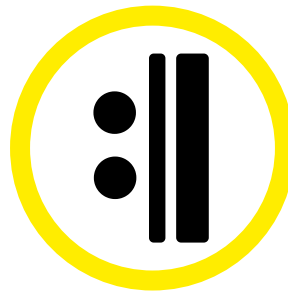
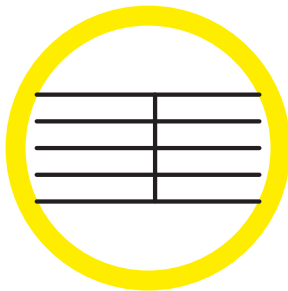
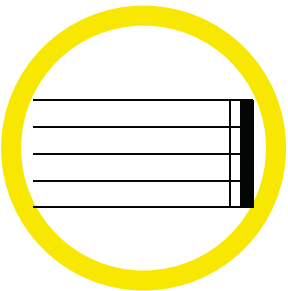
**natural**



# Time and Measure

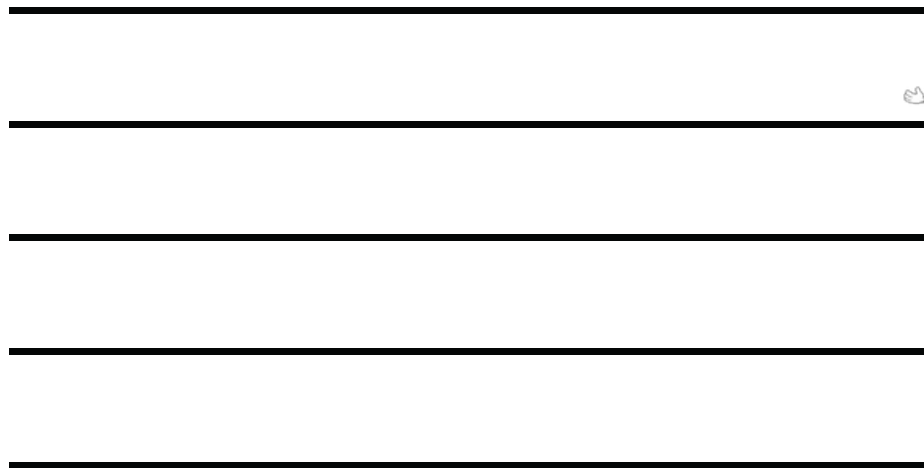
These symbols help us  
organize the music so we  
know when to play and  
how long to play



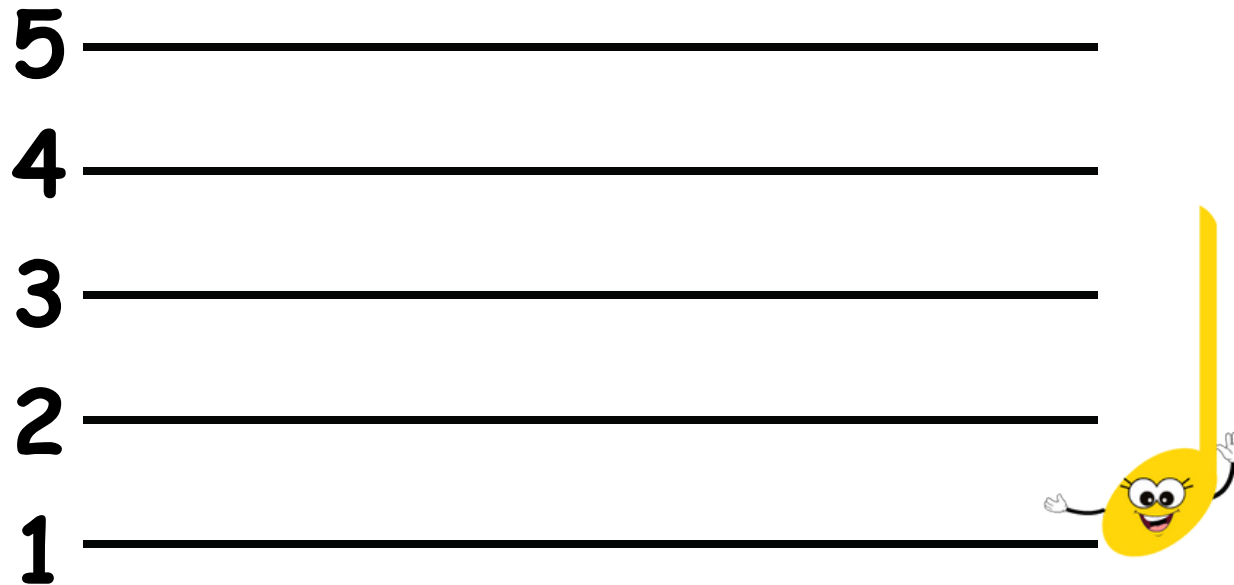




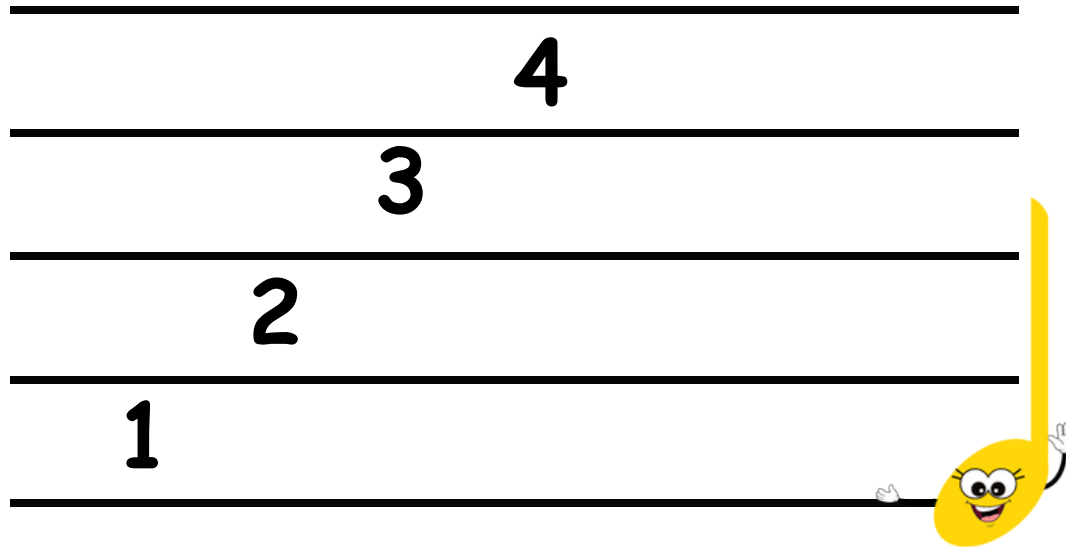
Staff  
5 lines where we write  
music notes



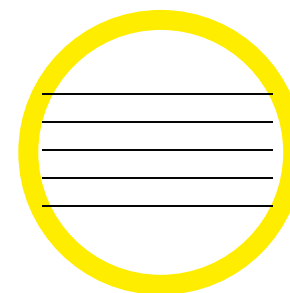
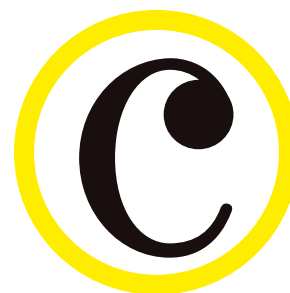
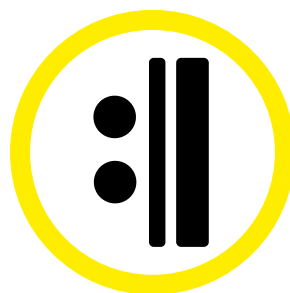
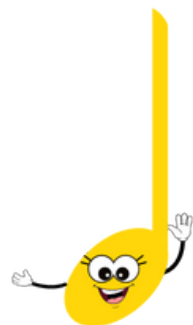
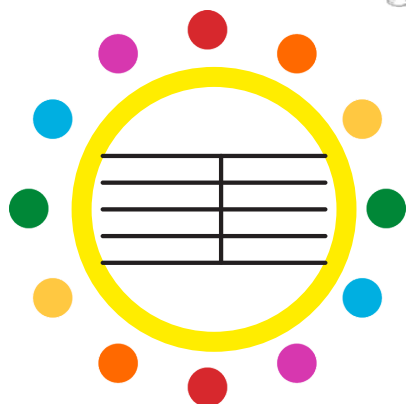
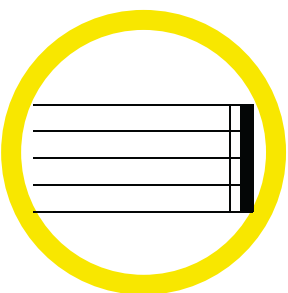
**STAFF**

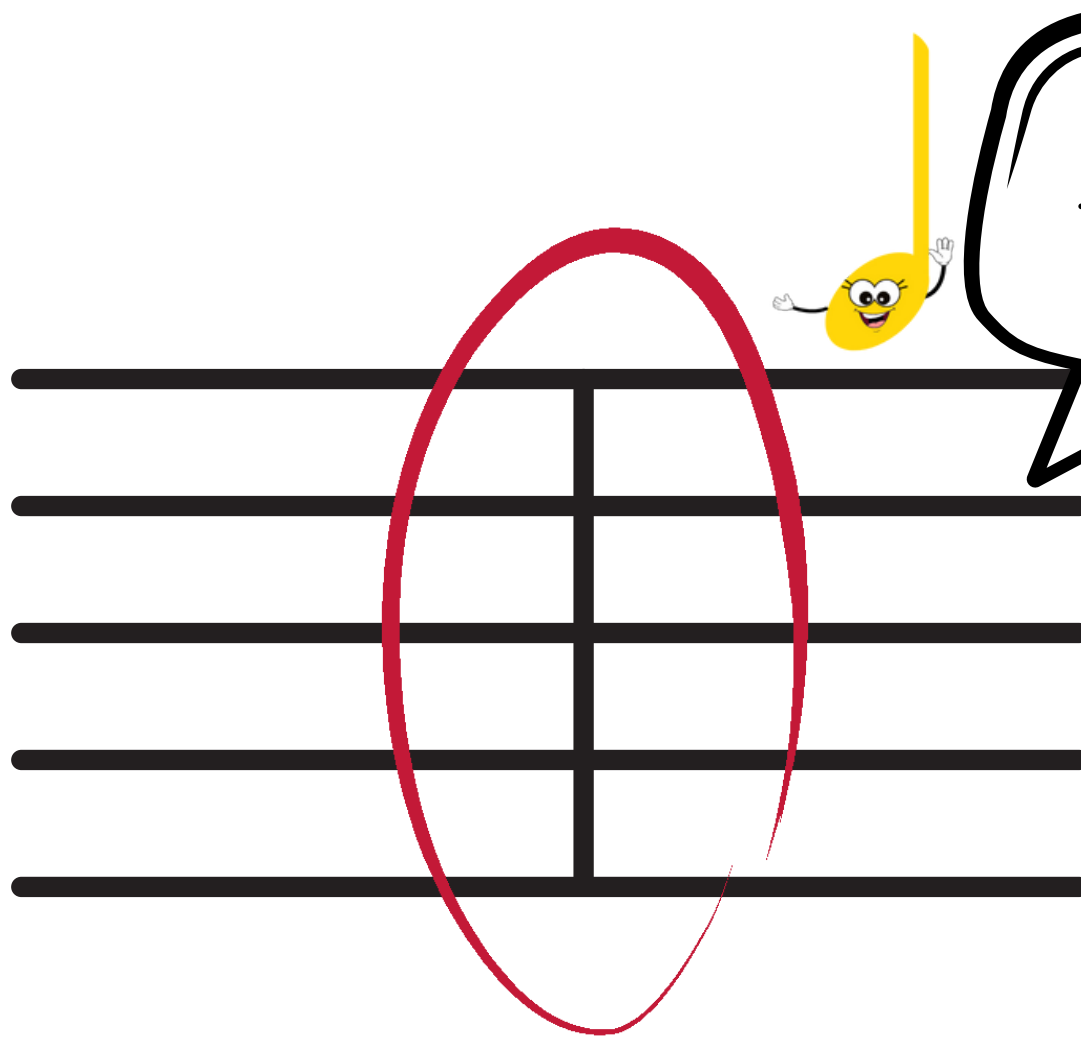


**STAFF**



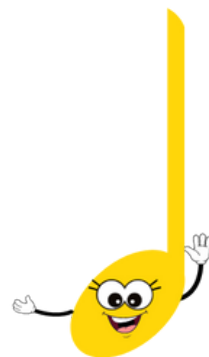
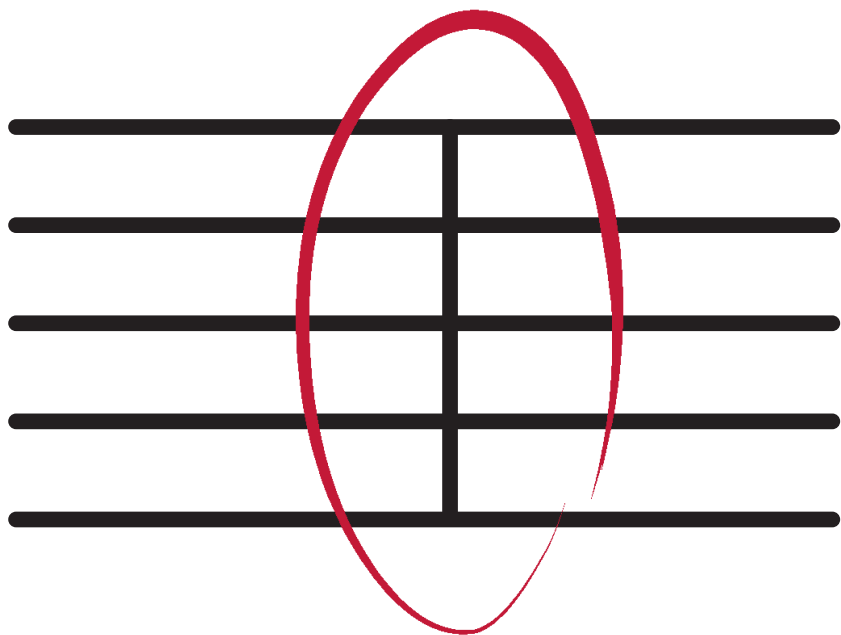
**STAFF**



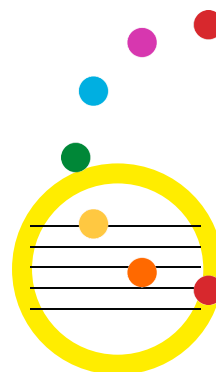
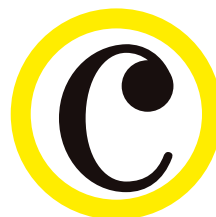
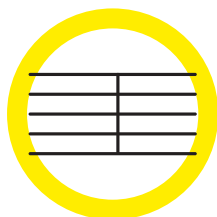
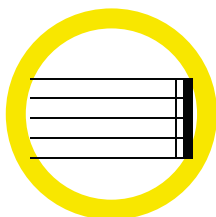


A bar line is a straight line  
It helps break the music  
into little parts called  
bars or measures.

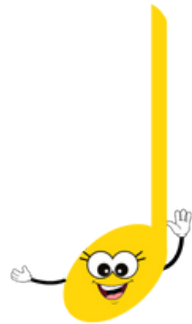
**bar line**



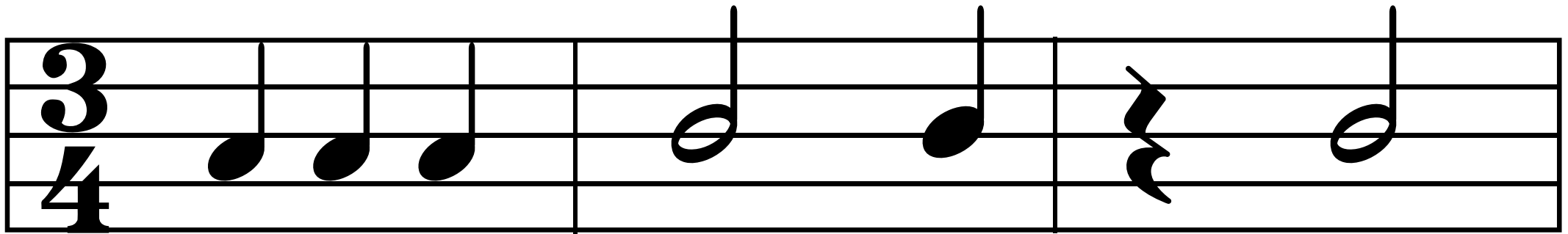
Let's explain  
together with  
another symbol -  
the time signature!



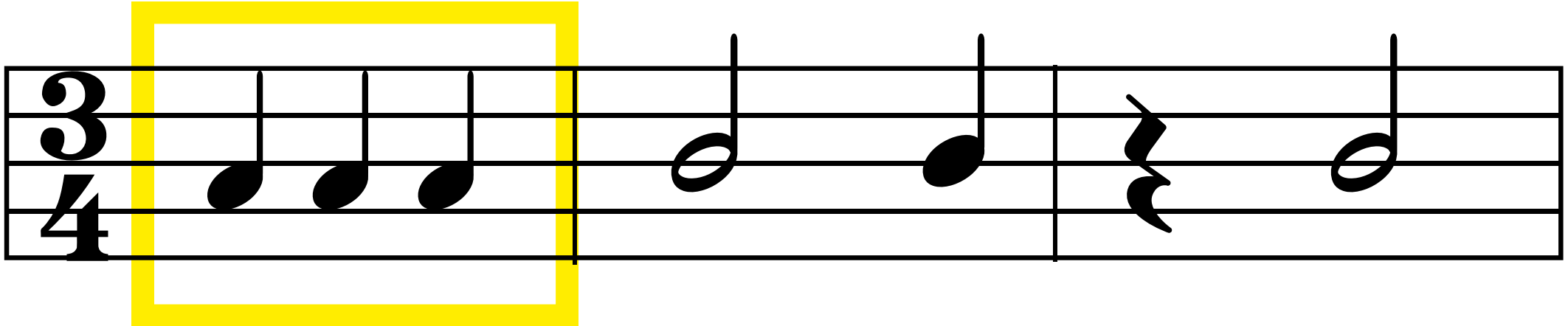
**3  
4**



A bar line is a line that splits  
the music into little boxes.  
Each box is called a bar or a  
measure.

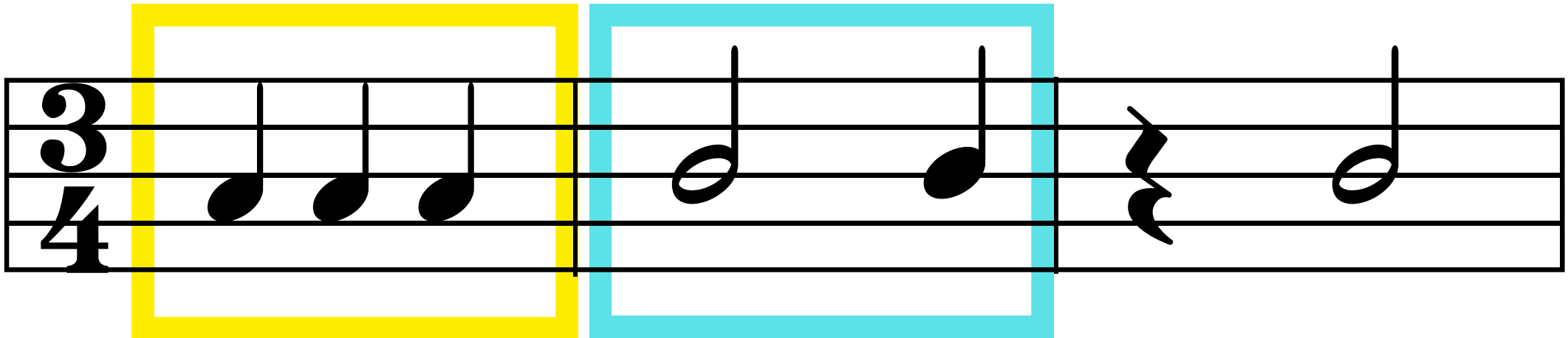


3  
4

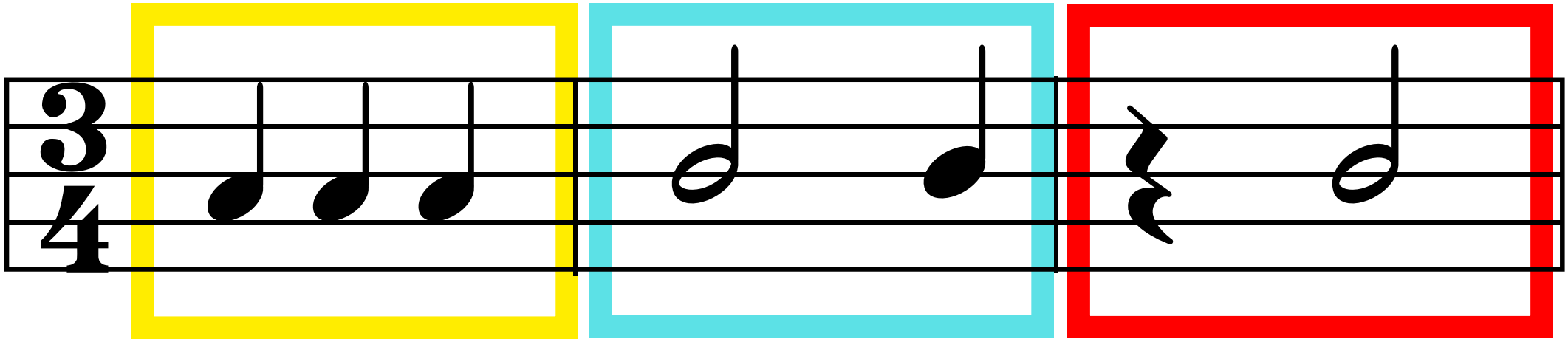
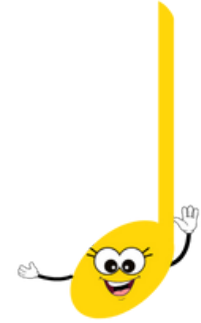




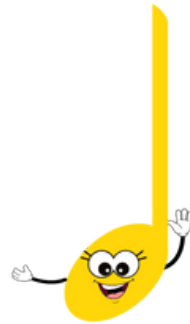
3  
4



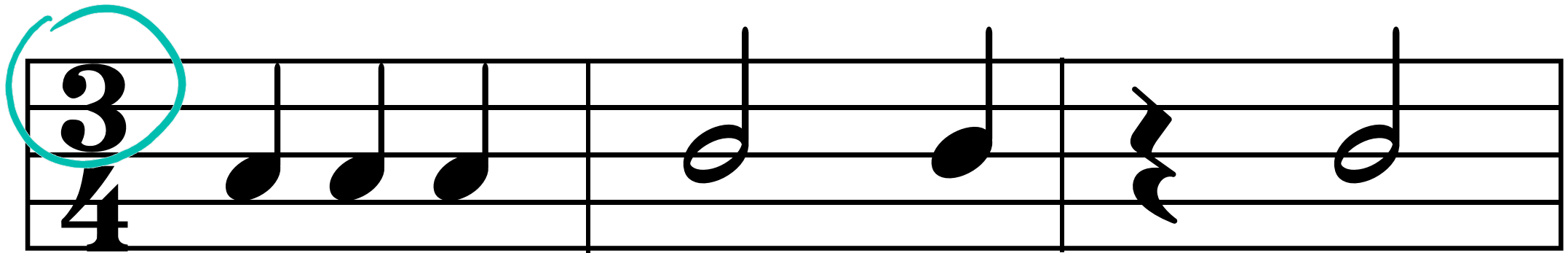
3  
4



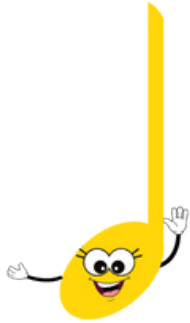
**3**  
**4**



If the time signature is  $\frac{3}{4}$   
that means:  
Every bar has 3 beats.



3  
4

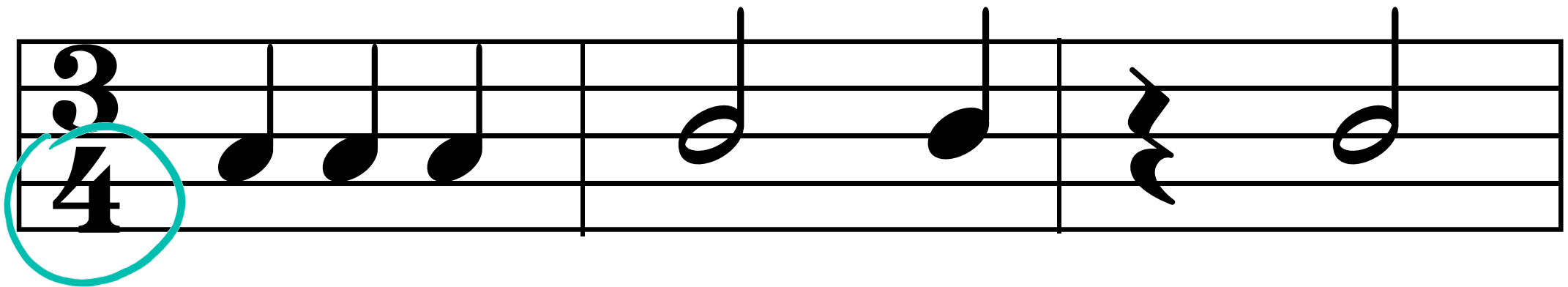
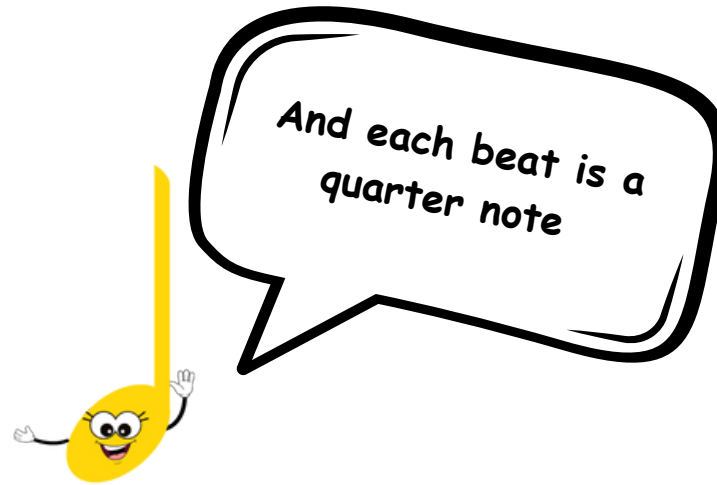


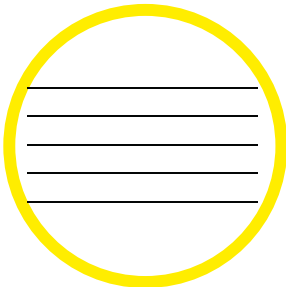
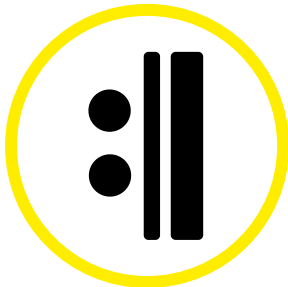
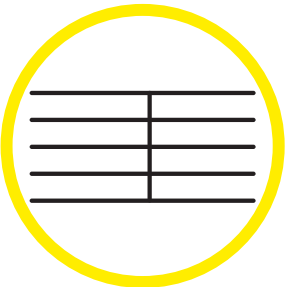
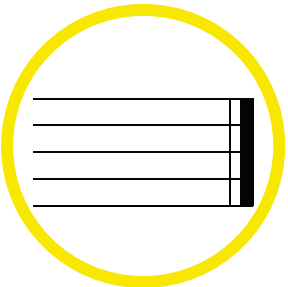
♪ = 1  
♩ = 2  
♫ = 1

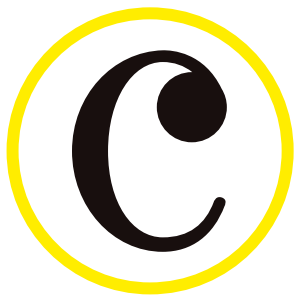
3  
4

A musical staff in 3/4 time. The time signature '3/4' is at the beginning, with the '3' circled in red. The staff contains a sequence of notes: three eighth notes in the first measure, two quarter notes in the second measure, a half note in the third measure, and a quarter note in the fourth measure. The notes are black with stems pointing upwards.

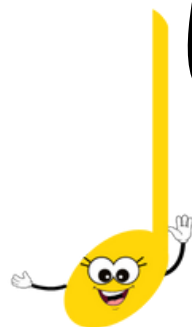
3  
4



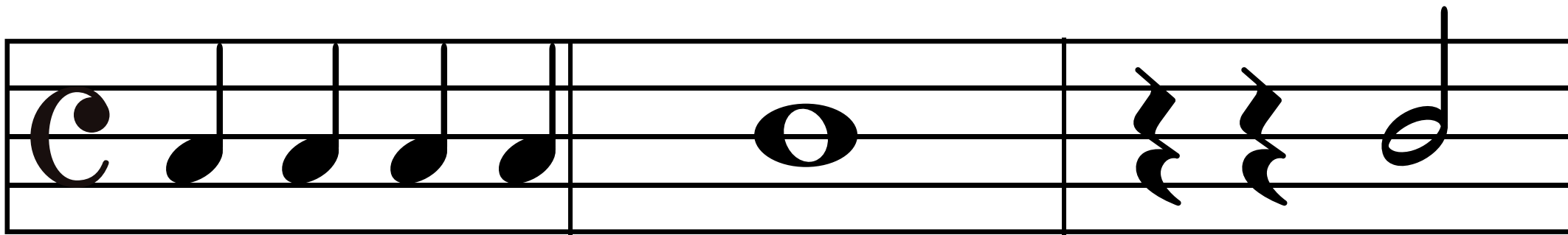


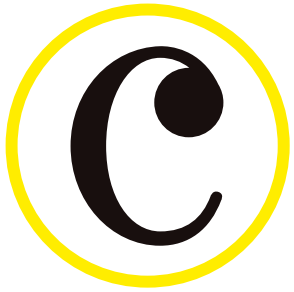


# Common Time



The big letter C in music  
means Common Time.  
It's just a fancy way to  
say 4/4 time!

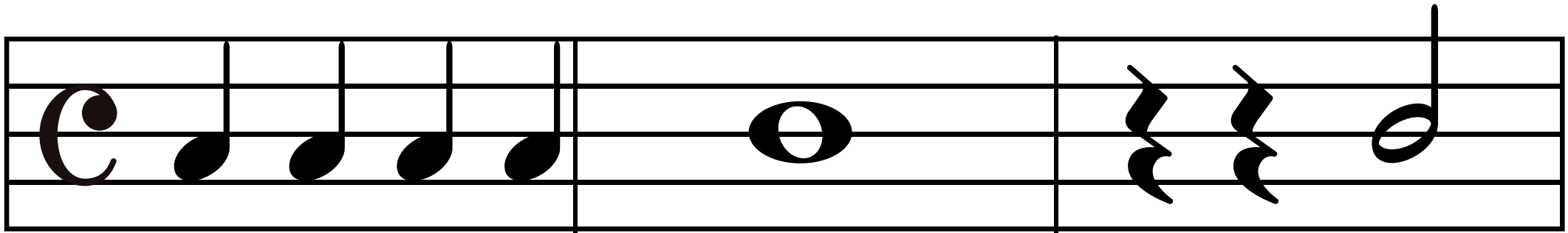




# Common Time

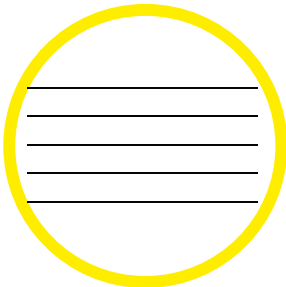
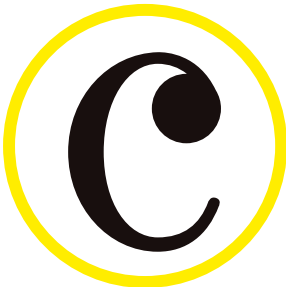
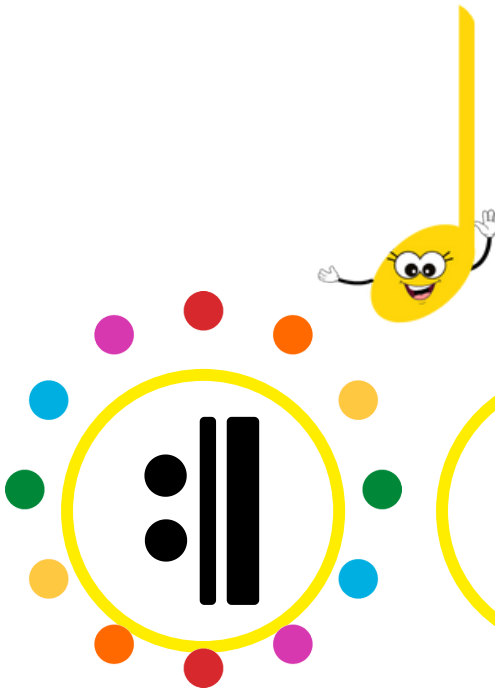
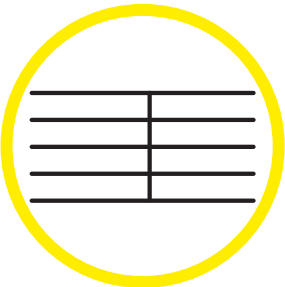
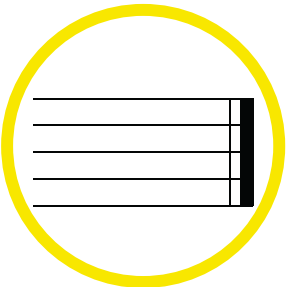


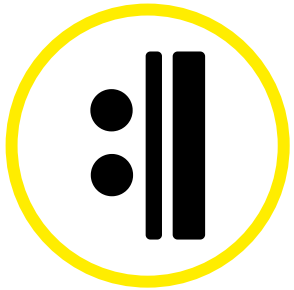
That means:  
Every bar has 4 beats  
And each beat is a  
quarter note



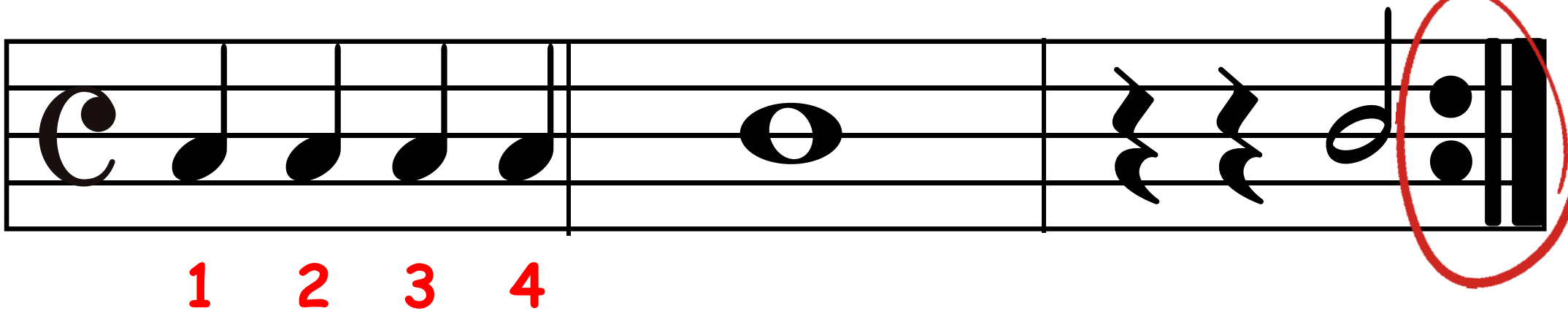
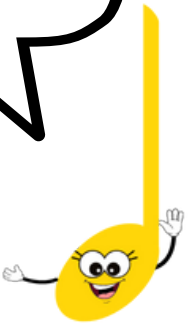
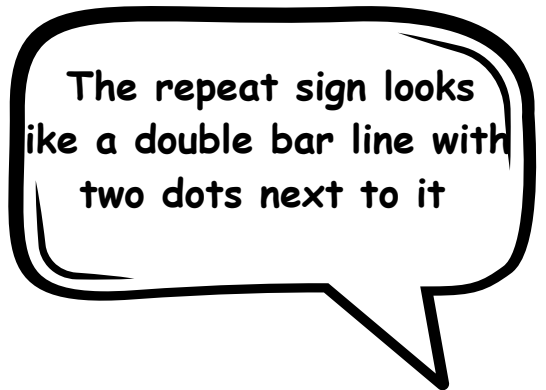
1 2 3 4

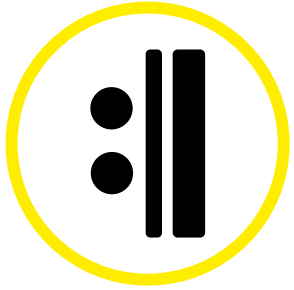






## repeat sign

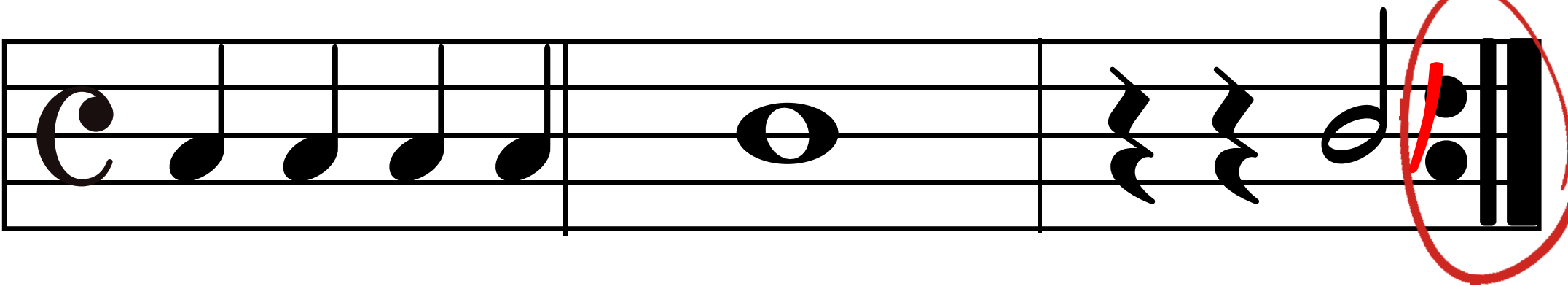
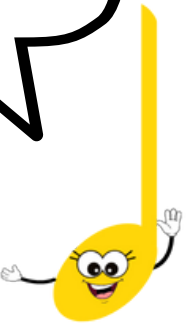


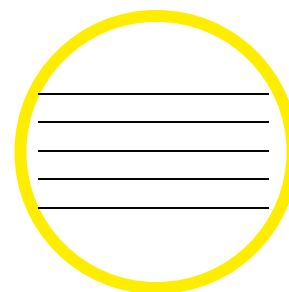
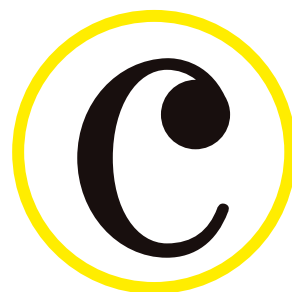
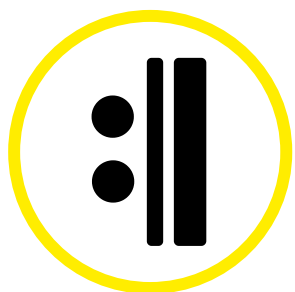
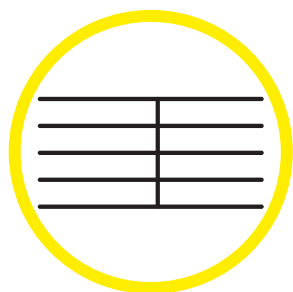
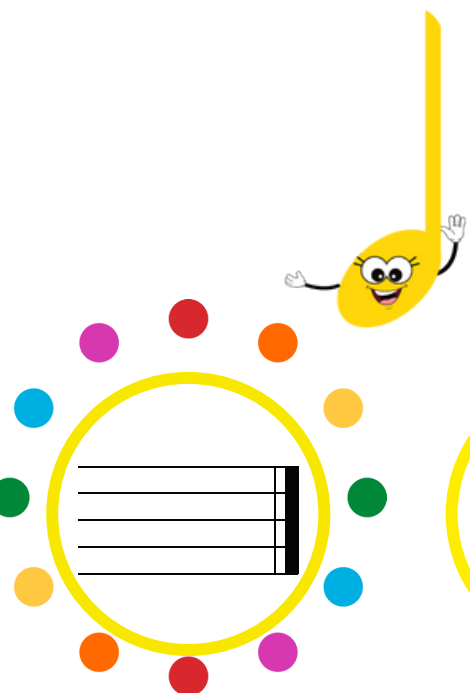


repeat sign

PLAY  
AGAIN!

It means:  
Go back and play it  
again!

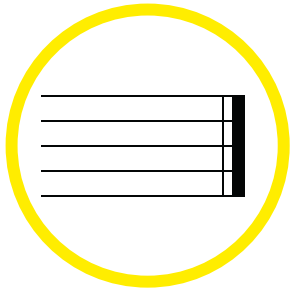




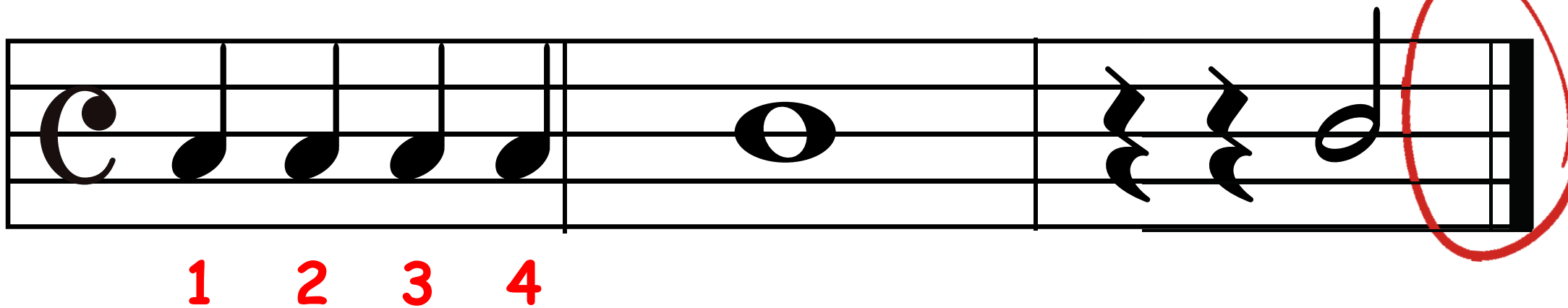


**End of the Song Bar (Final Bar Line)**

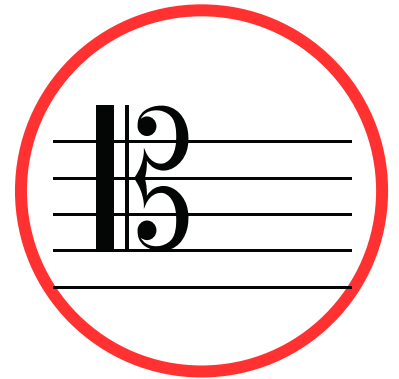
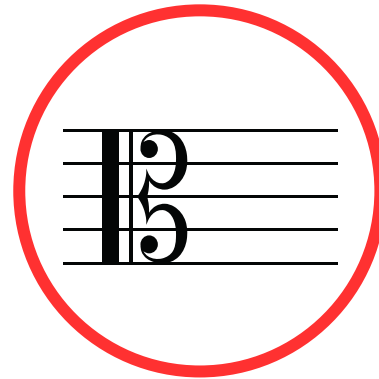
# End of the Song Bar (Final Bar Line)

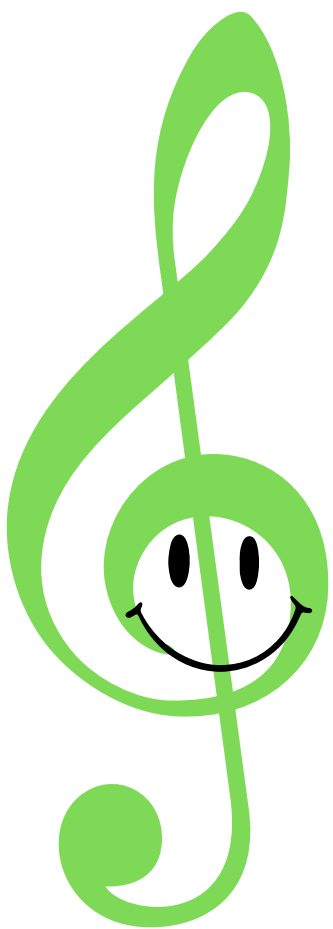


When you see the final  
bar line, you know:  
No more playing - the  
song is done!



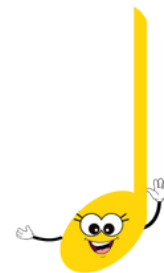
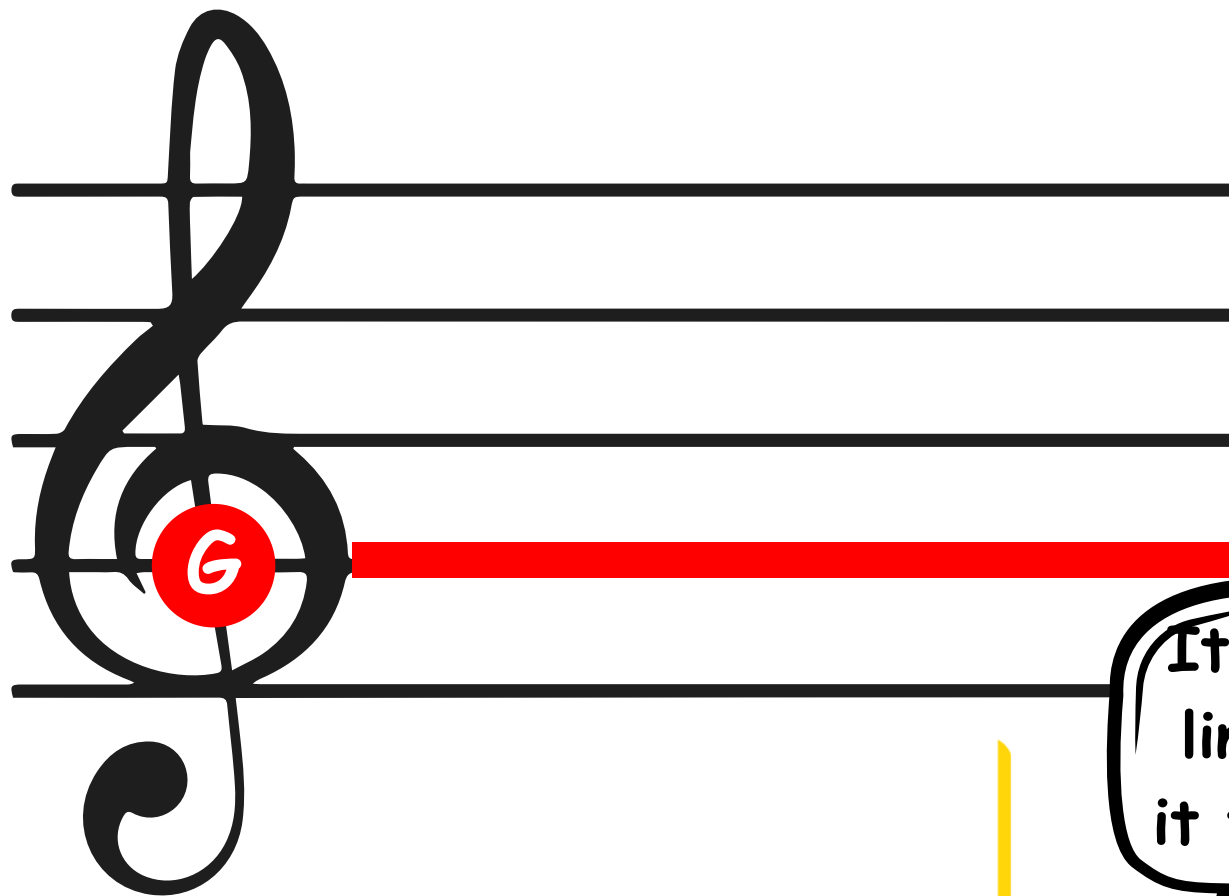
# Clefs



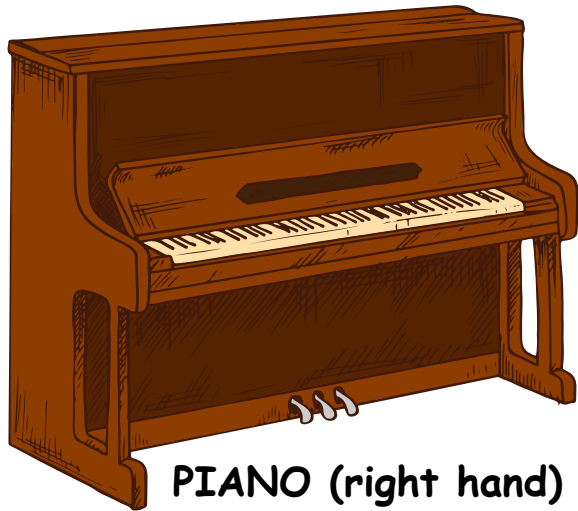


**treble clef**

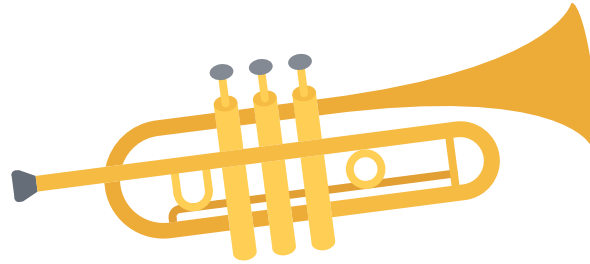




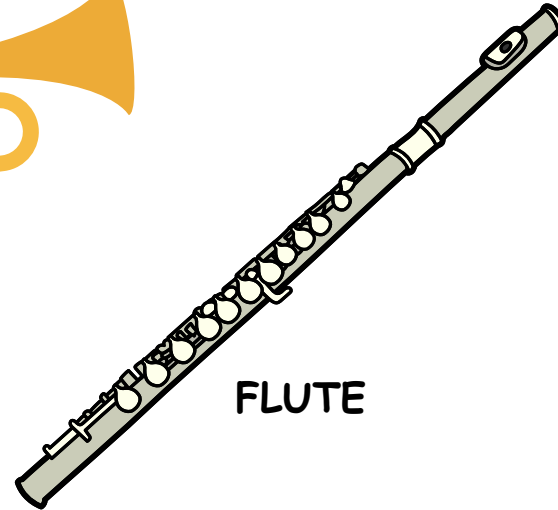
It circles the G line, so we call it the G clef too



PIANO (right hand)



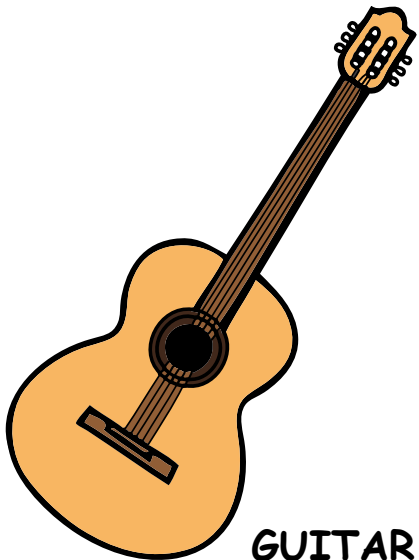
TRUMPET



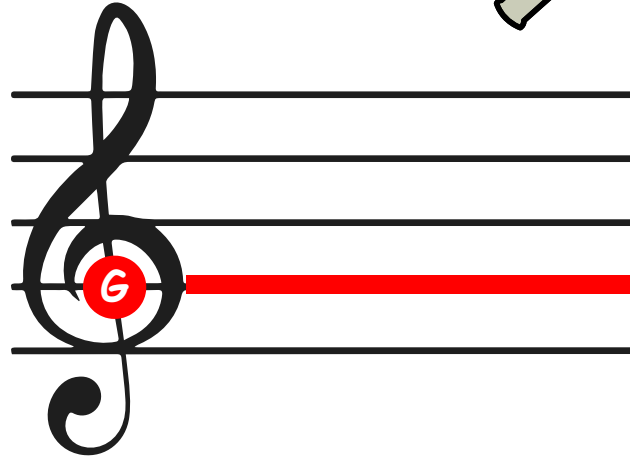
FLUTE



VIOLIN



GUITAR



It is perfect for  
instruments that  
play high notes!

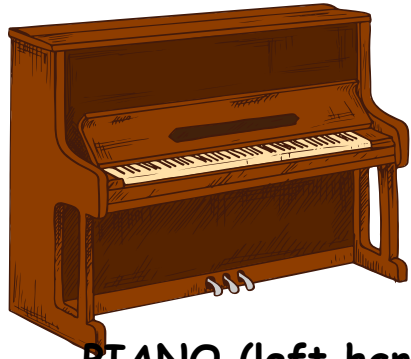


**bass clef**



The dots go around  
the F line, so we  
also call it the F  
clef

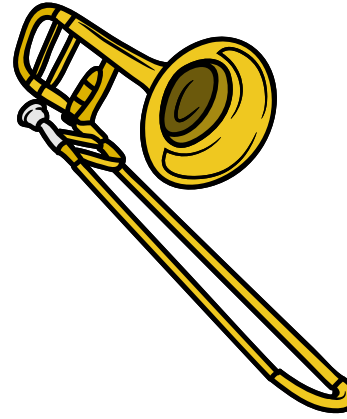




PIANO (left hand))



CELLO



TROMBONE



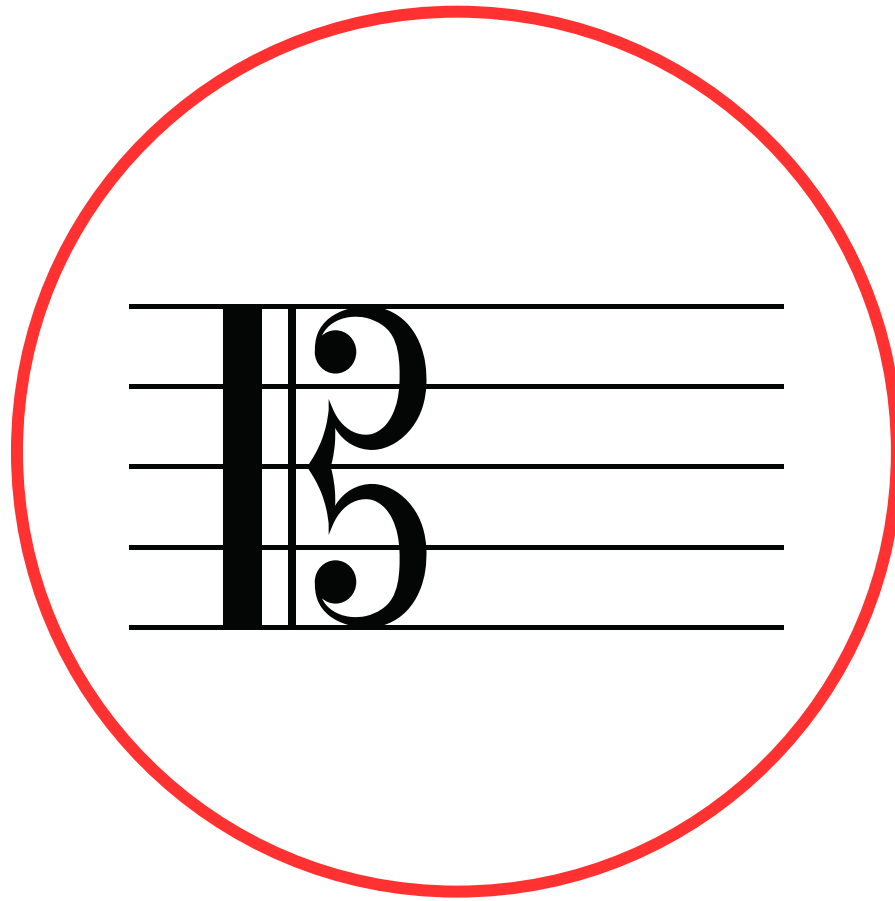
BASS GUITAR



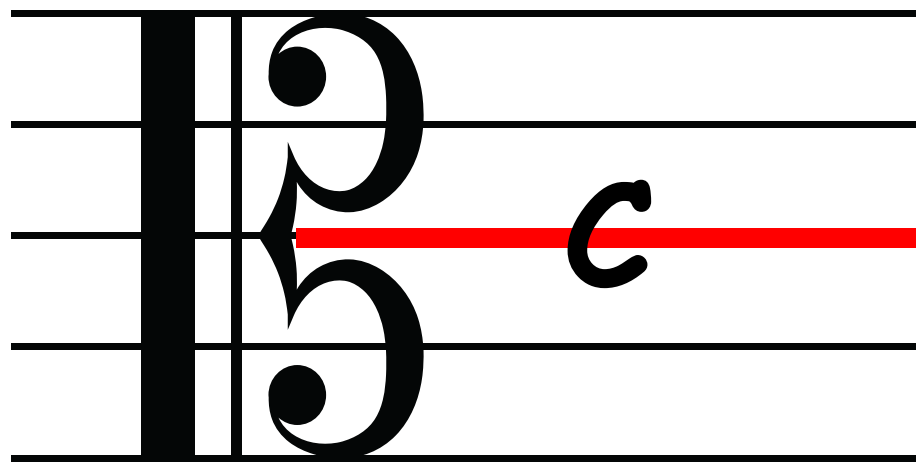
TUBA



Perfect for  
instruments that  
play low sounds!

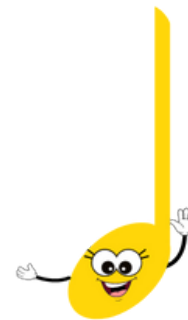


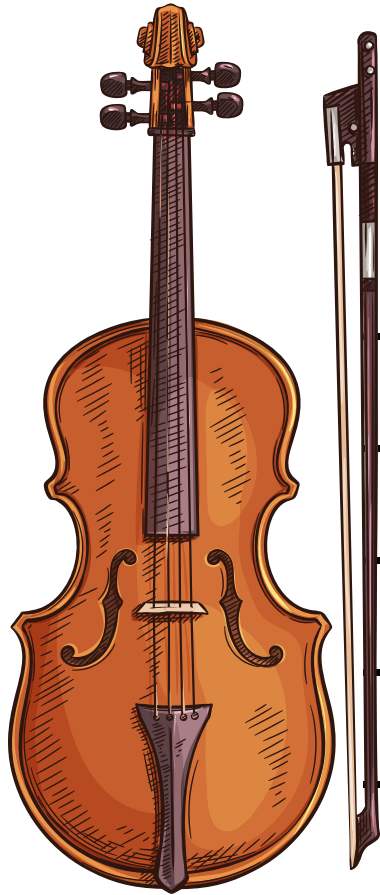
**alto clef**



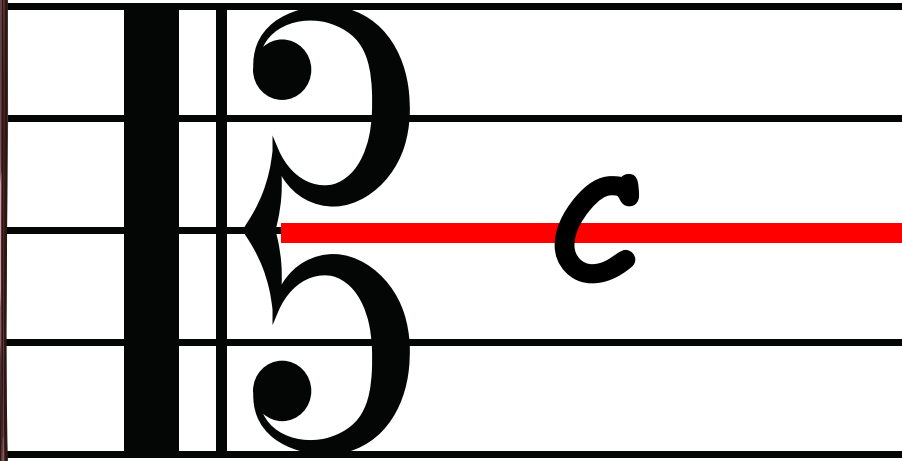
The middle of the  
clef shows middle  
C, that's why it's a  
C clef

alto clef





VIOLA

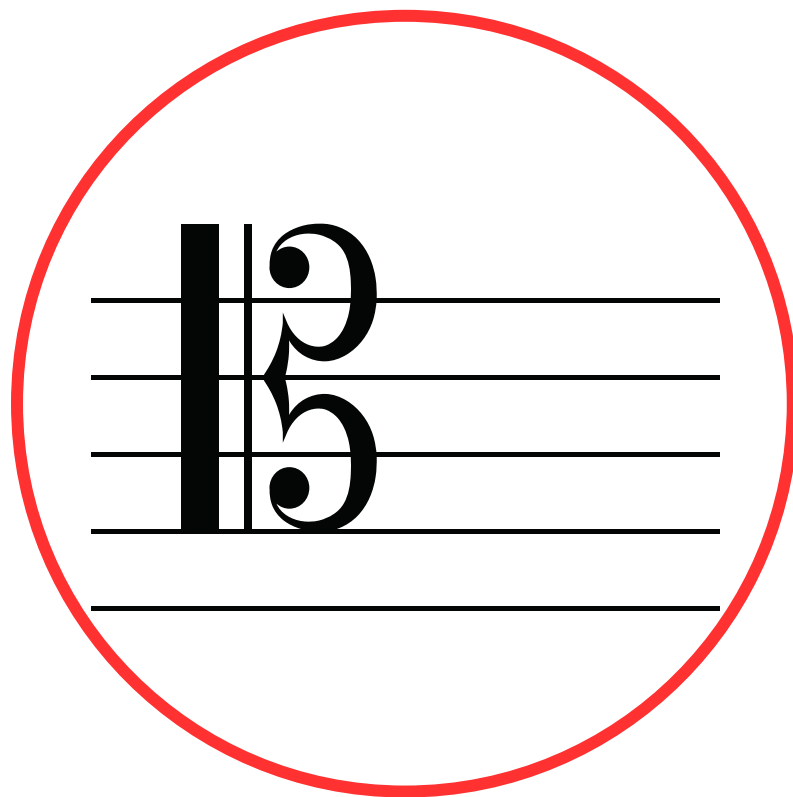


The Instrument that uses  
Alto Clef is  
Viola - it looks like a violin,  
but it's a little bigger and  
plays lower sounds

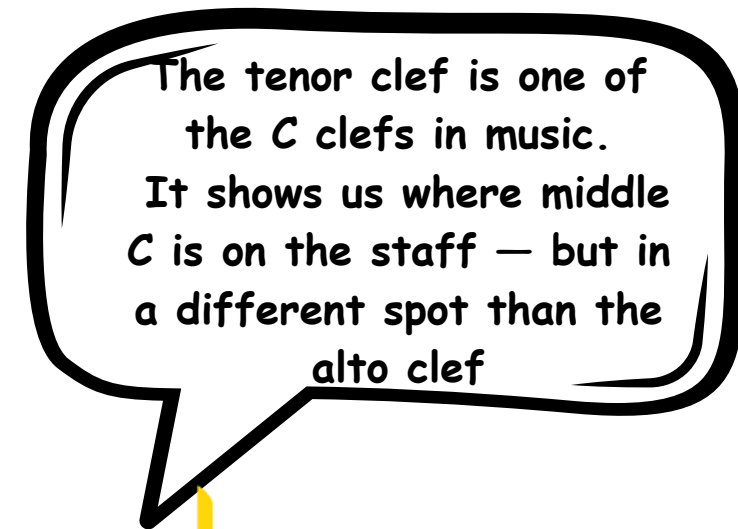
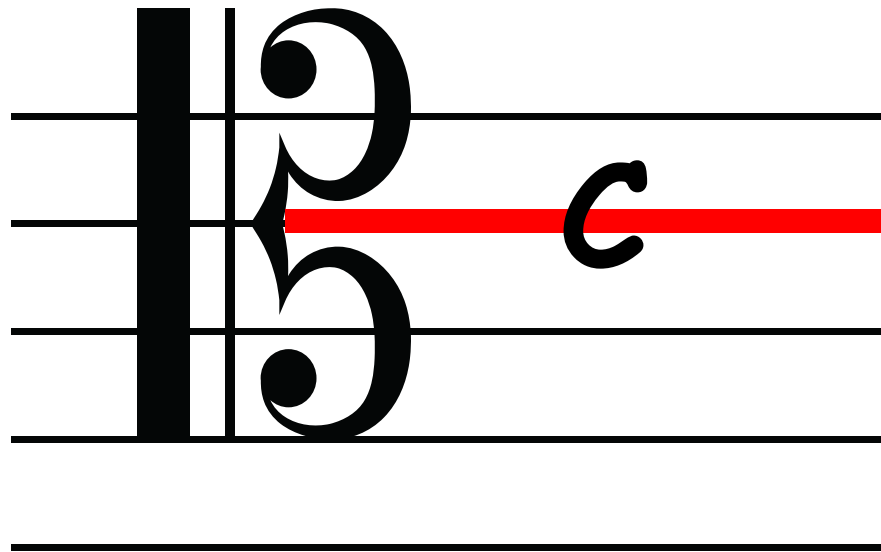
alto clef







**tenor clef**



**tenor clef**

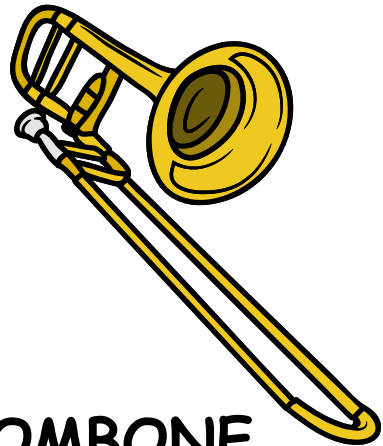




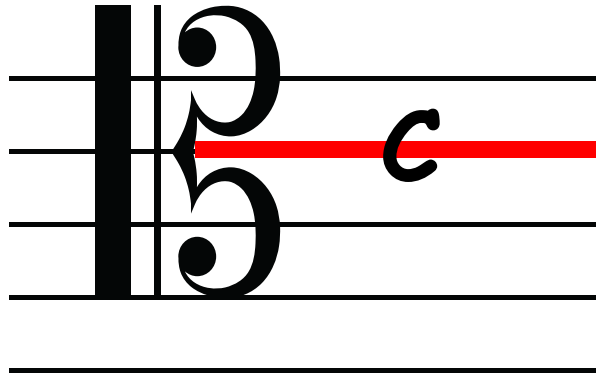
**CELLO**



**BASSOON**

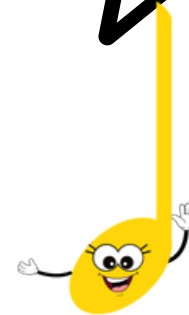


**TROMBONE**

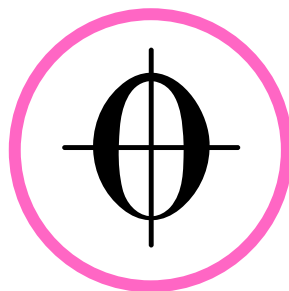
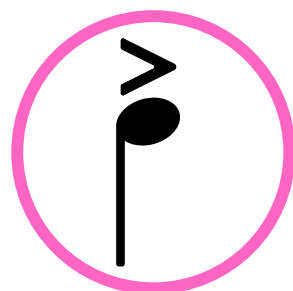
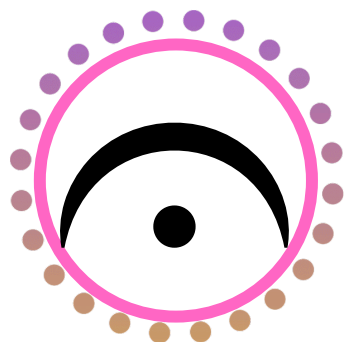
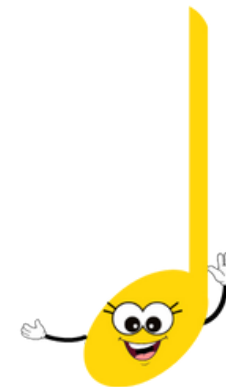


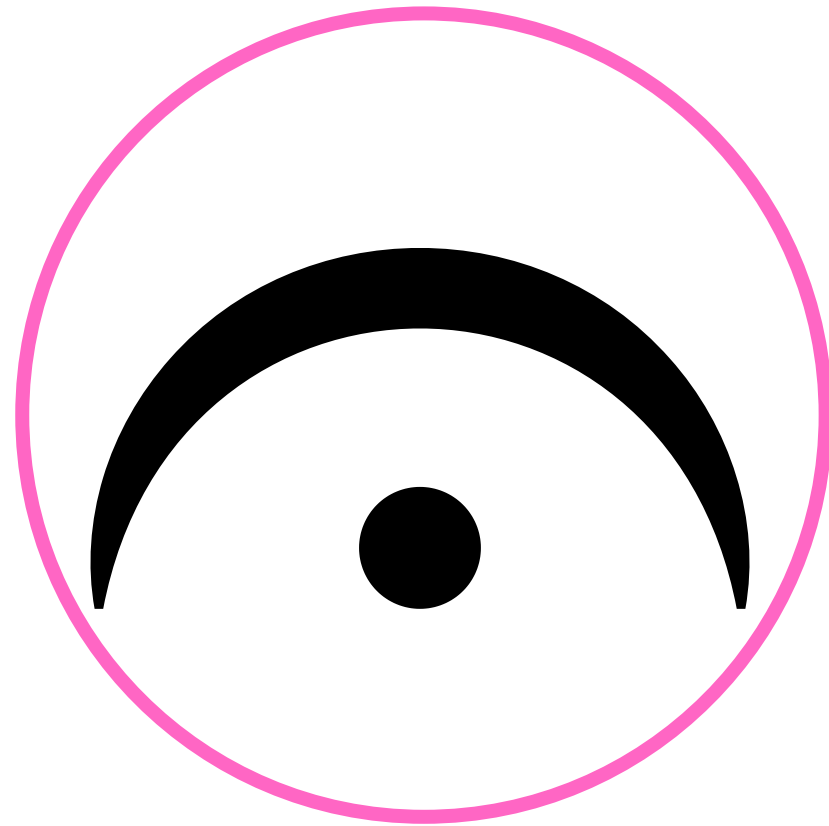
**tenor clef**

Some instruments that sometimes use the tenor clef are the Cello (when playing higher notes), Bassoon (for higher music), Trombone

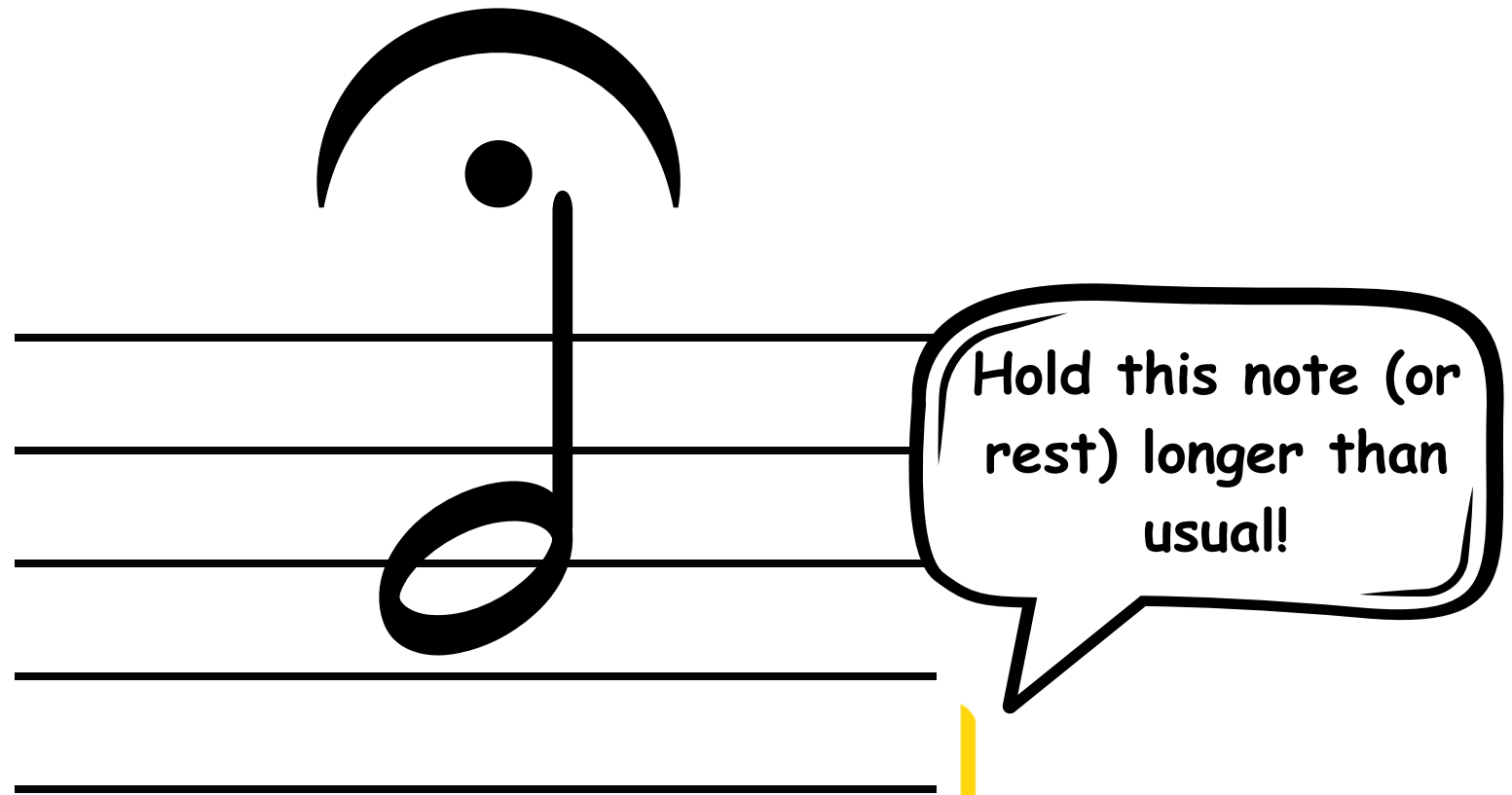


# Other Symbols

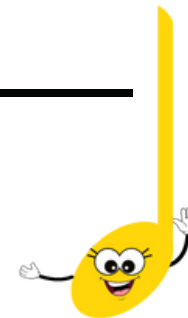




**fermata**

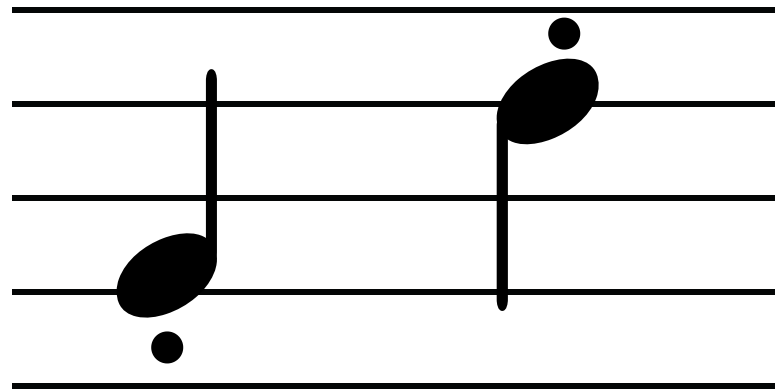


**fermata**

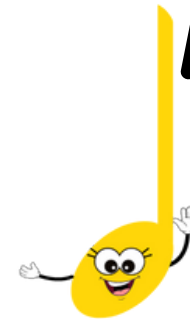




**staccato**

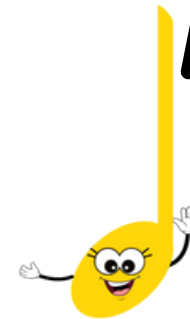
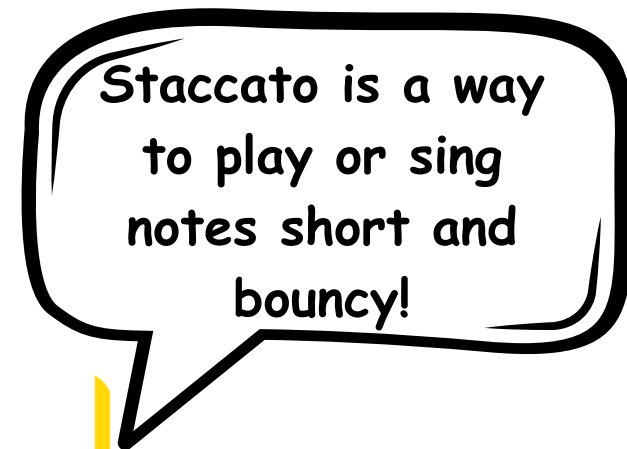
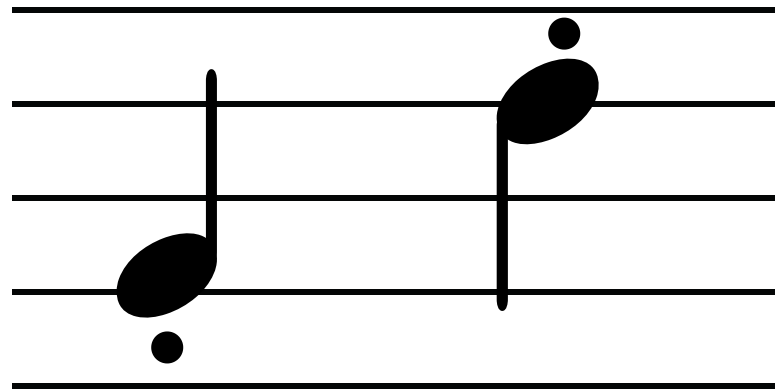


a small dot  
placed above or  
below a note



**staccato**

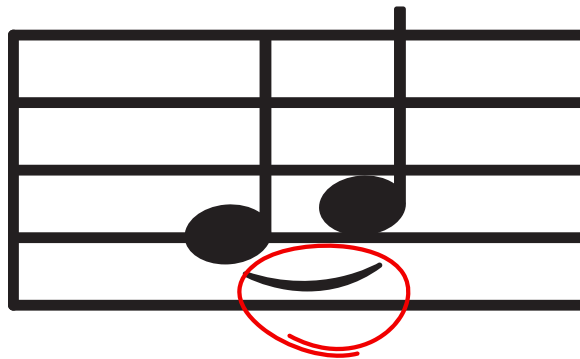




**staccato**



**slur**



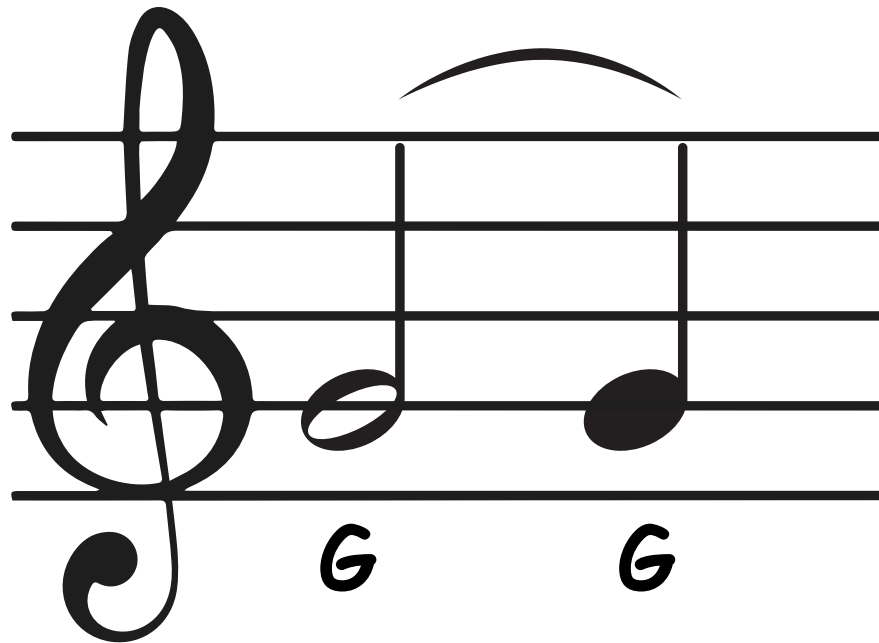
This curved line is a slur.  
It tells us to play the  
notes legato, which  
means smooth, connected

**slur**





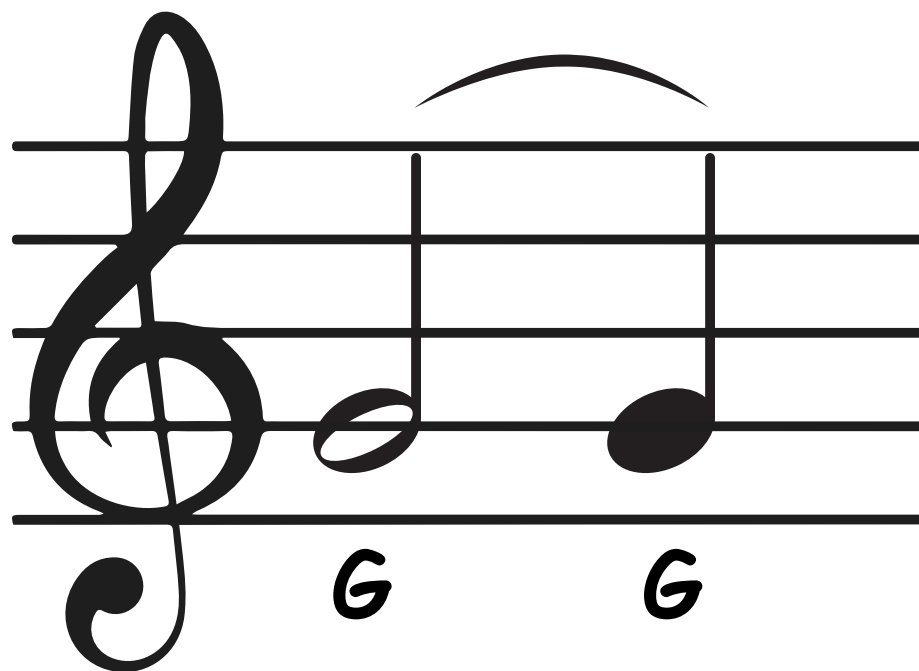
**tie**



A tie is a curved line that connects two (or more) of the same note

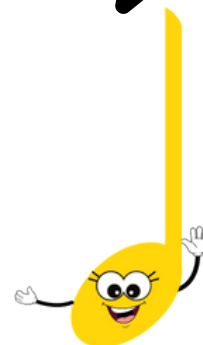
**tie**

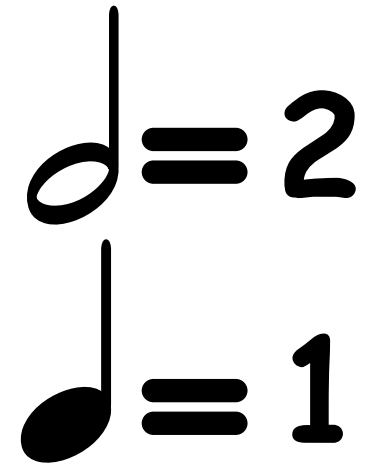
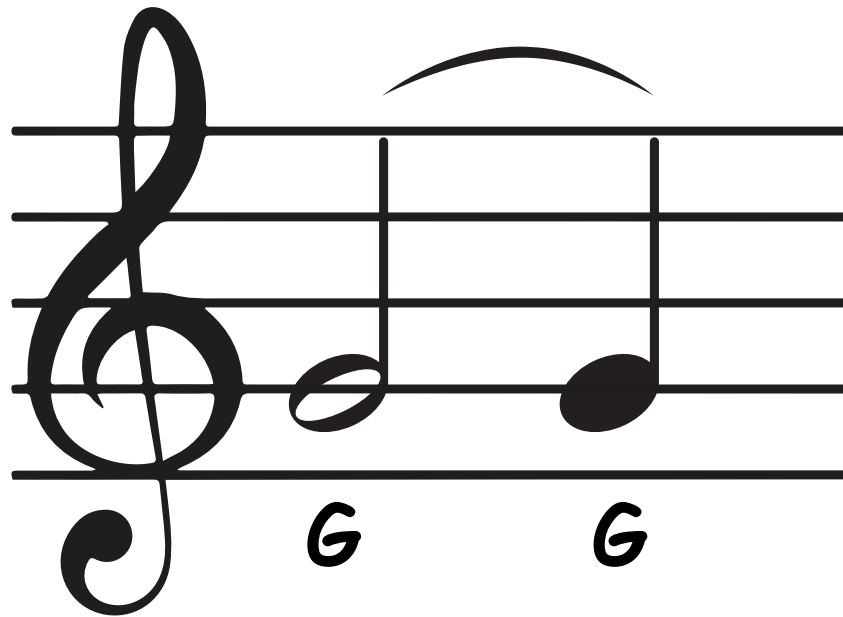




Hold the note for the  
total value of both  
notes combined — don't  
play it again

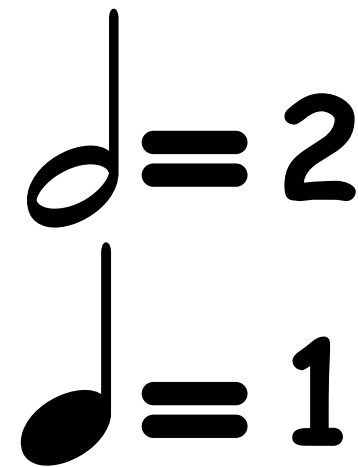
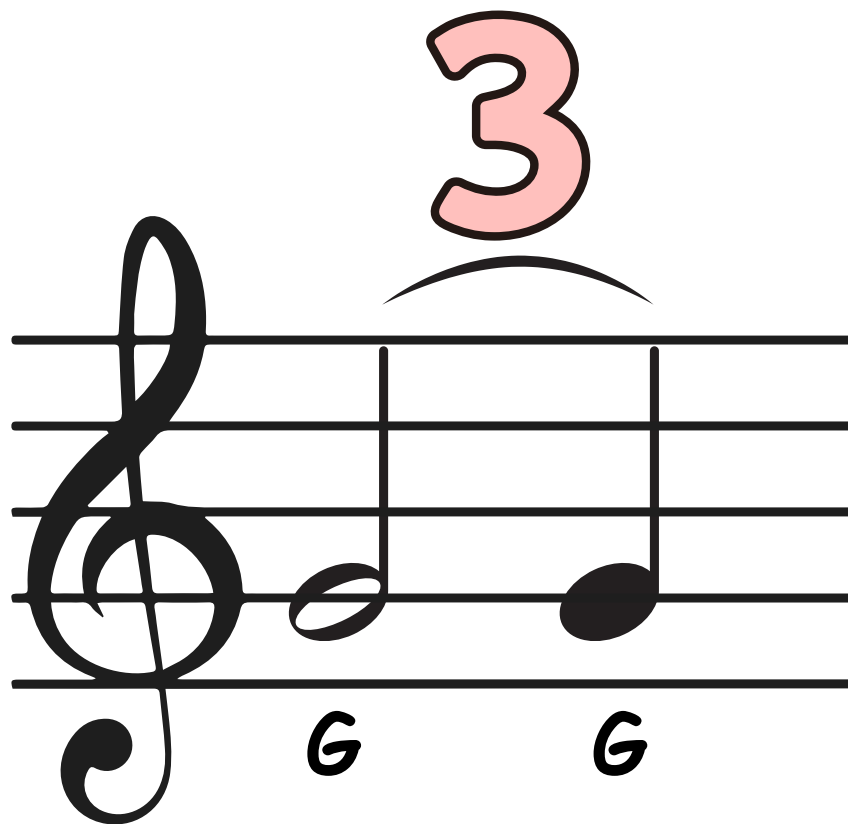
**tie**





**tie**



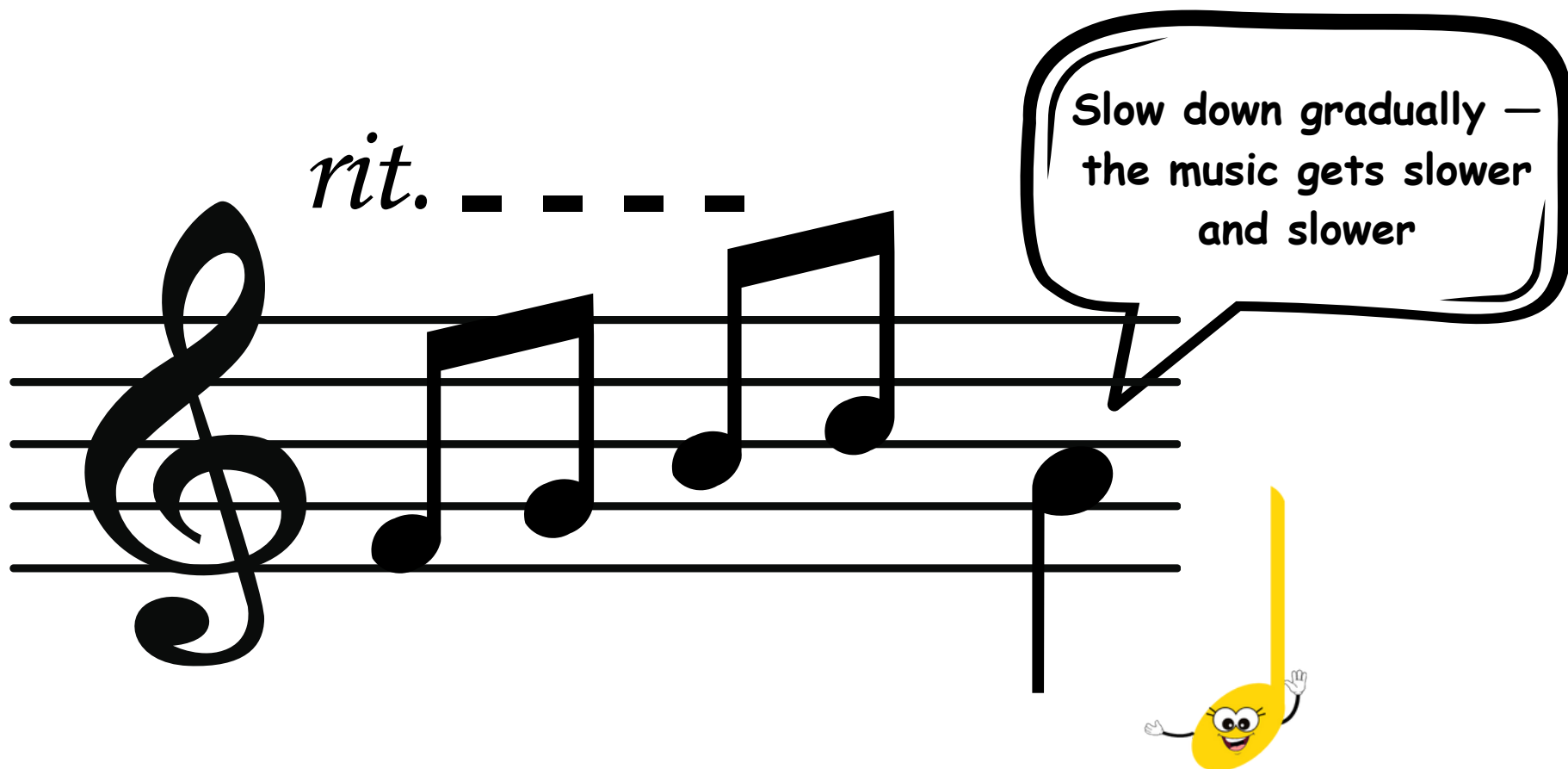


**tie**



*rit.*

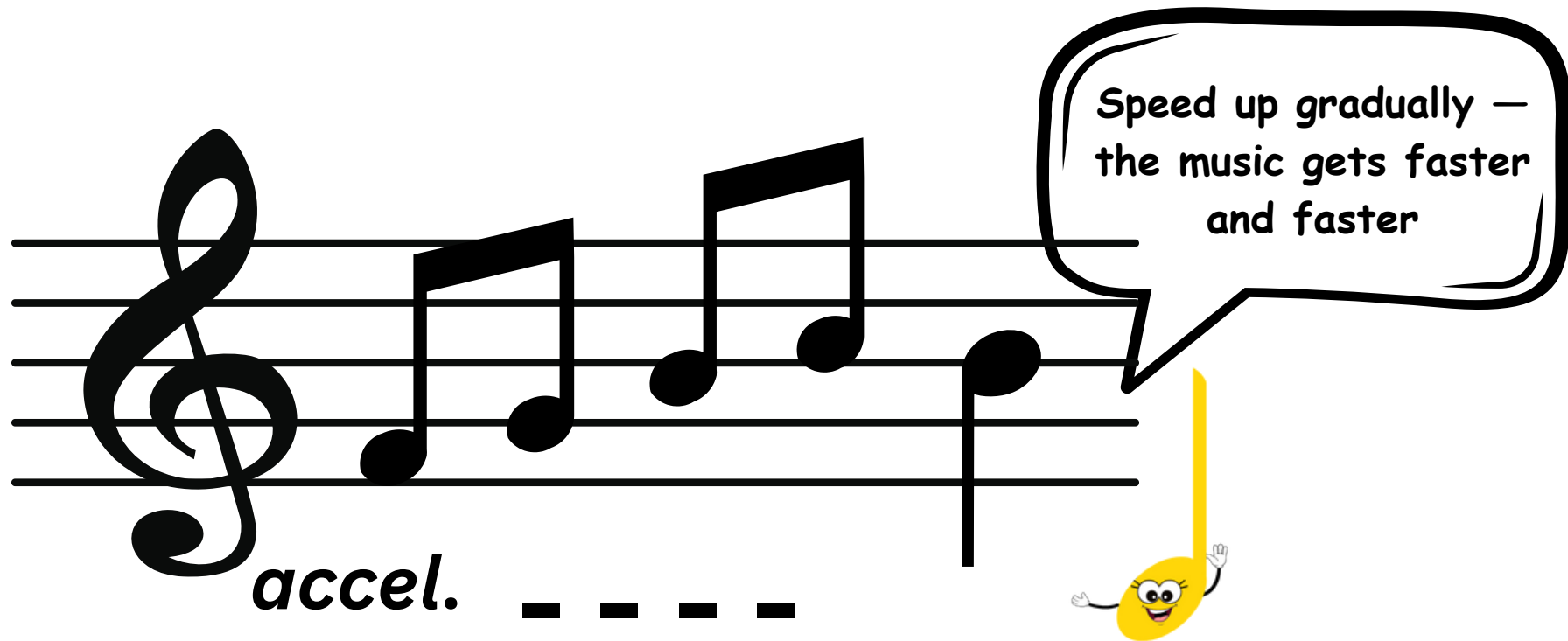
**ritardando**



**ritardando**

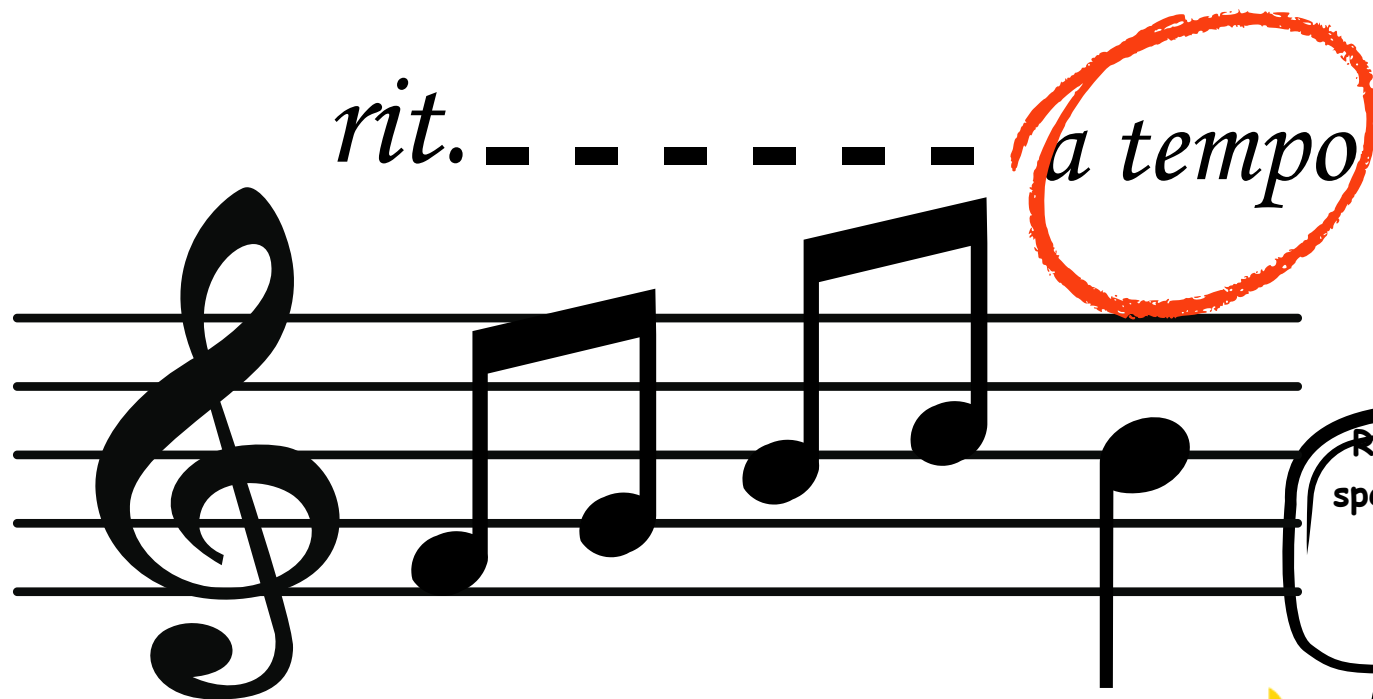


**accelerando**



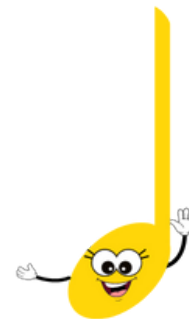
**accelerando**





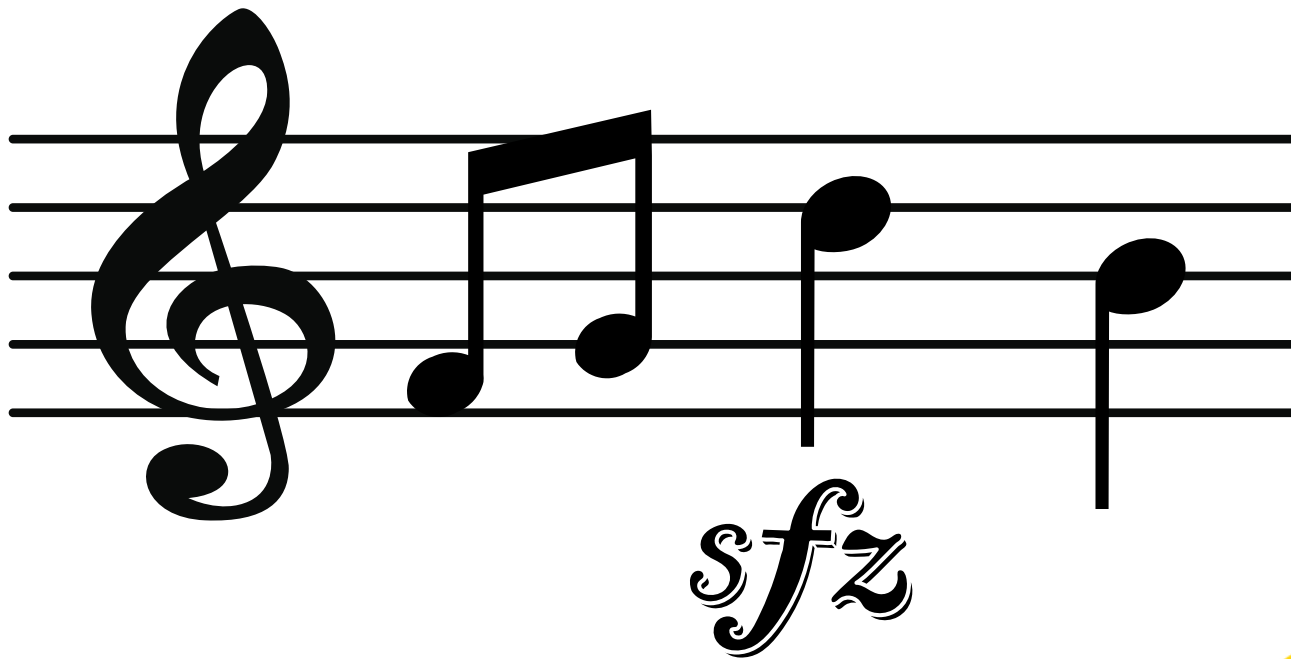
Return to the original speed after a change in tempo (like after a ritardando or accelerando)

**a tempo**





**sforzando**

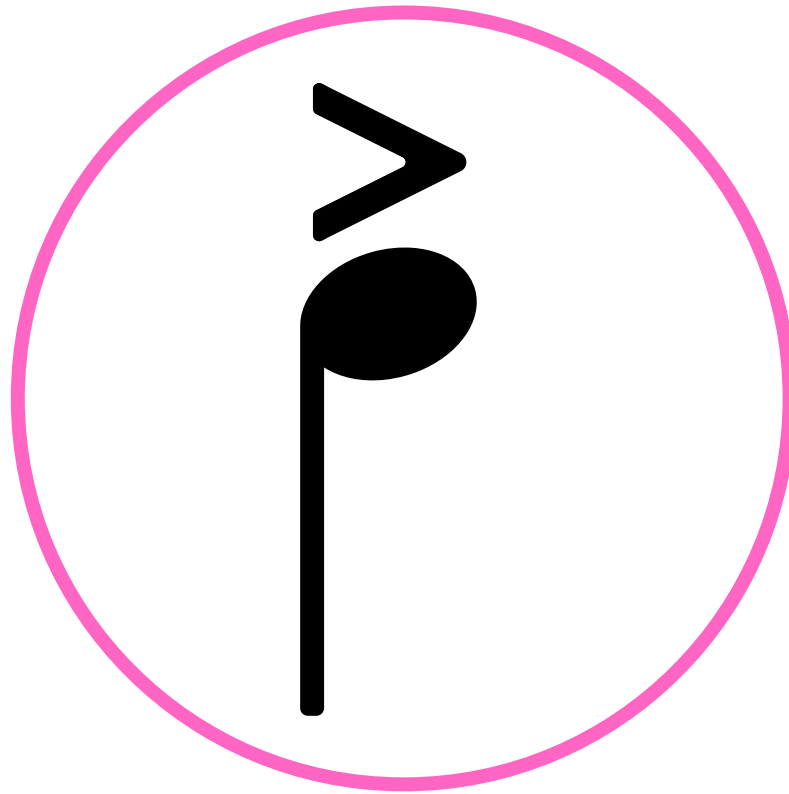


If you're playing softly  
and then see sfz on a  
note, you suddenly play  
that note loudly, then  
go back to soft

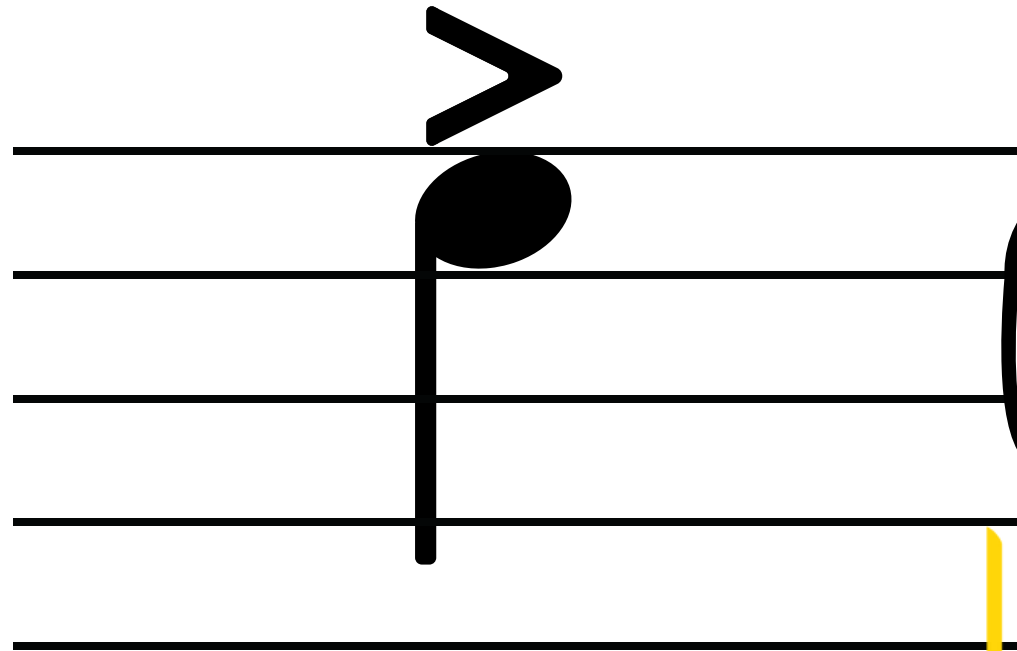


**sforzando**



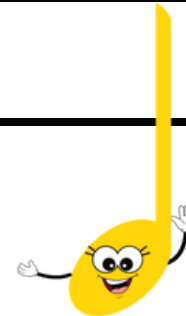


**accent**



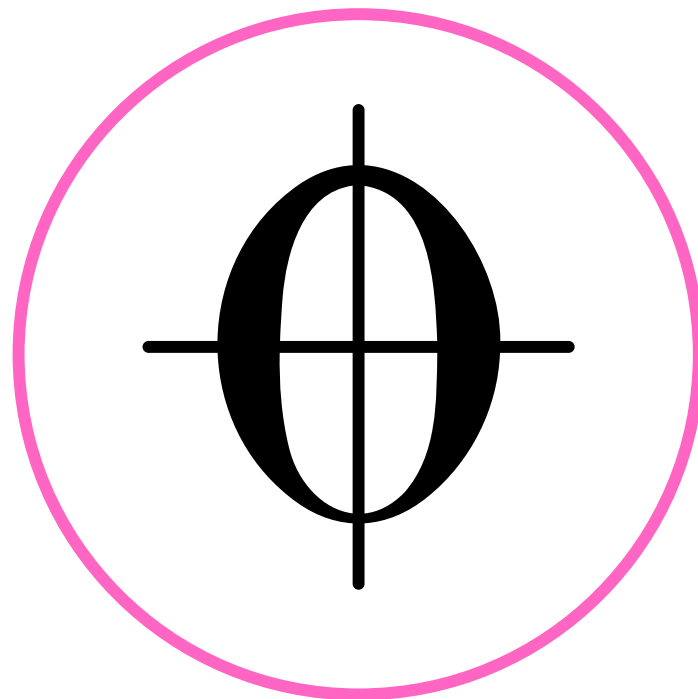
An accent means you  
play a note a little  
stronger or louder than  
the others

**accent**





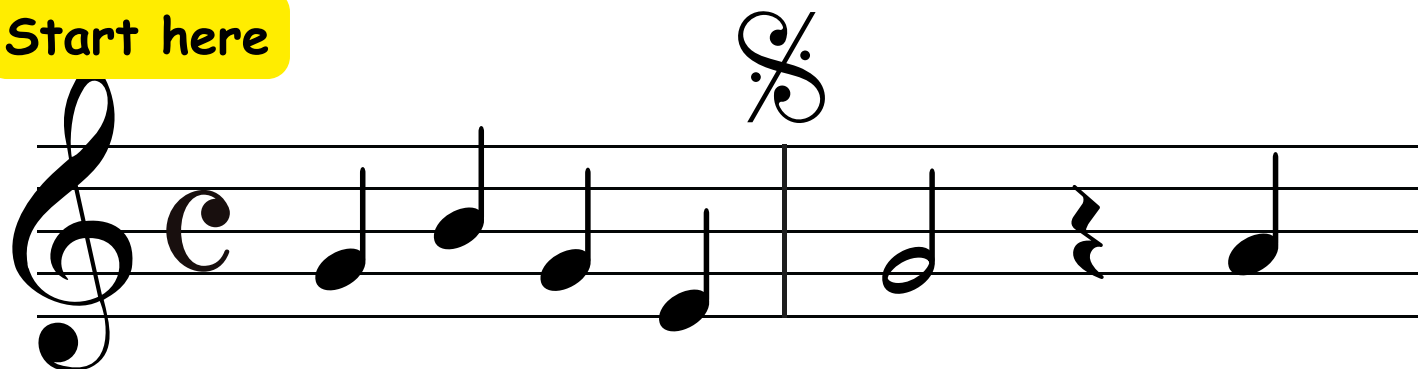
***SEGNO***



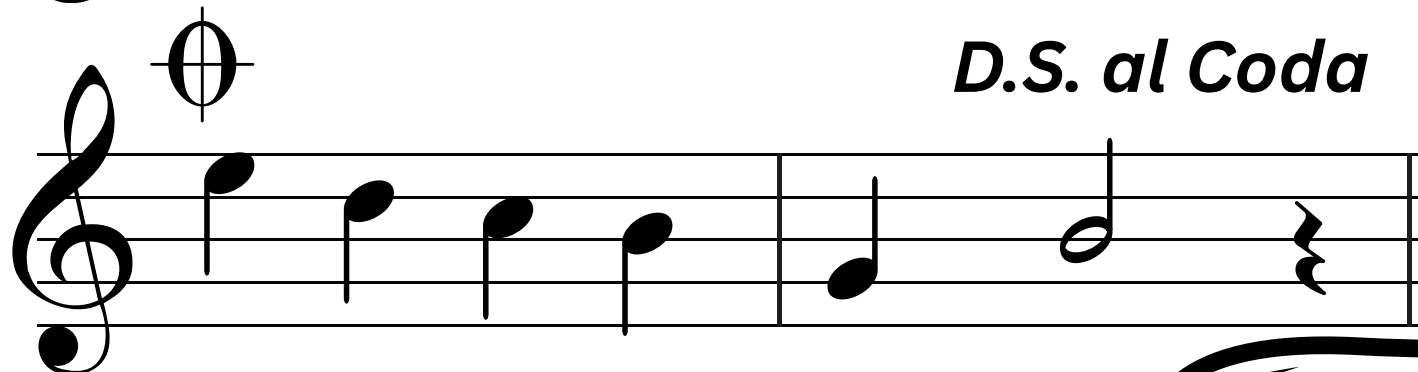
***CODA***

***D.S. al Coda***

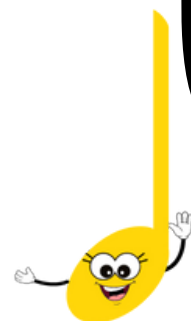
Start here



*D.S. al Coda*



**CODA**

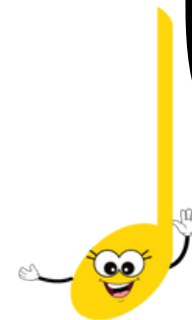


Start playing from  
the beginning of  
the music.

The image displays three staves of musical notation. The first staff contains a melody with a Segno sign (a stylized 'S' with a slash) circled in pink above the fourth measure. A red arrow points from the end of the first staff to the Segno sign. The second staff begins with a Coda sign (a circle with a cross) above the first measure. The third staff is labeled 'CODA' and contains a short musical phrase. The text 'D.S. al Coda' is written in yellow between the first and second staves.

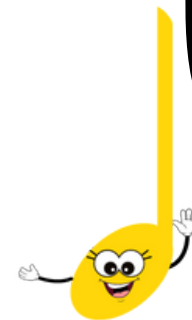
**D.S. al Coda**

**CODA**



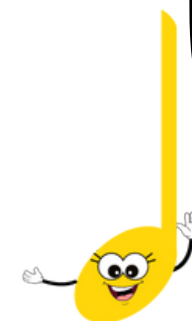
When you see D.S.  
al Coda, go back to  
the Segno sign

The image displays three staves of musical notation. The top staff begins with a Segno symbol (a stylized 'S' with a slash and a dot) circled in pink. A red double-headed arrow connects this symbol to a Coda symbol (a circle with a cross) also circled in pink on the second staff. The text *D.S. al Coda* is written in yellow between the first and second staves. The third staff is labeled **CODA** in bold black text and contains a short musical phrase ending with a double bar line.



Play from the Segno  
until you reach the  
Coda sign

The diagram illustrates a musical structure with three staves. The first staff contains a treble clef, a common time signature (C), and a sequence of notes: a half note on G4, a quarter note on A4, a quarter note on B4, a quarter note on C5, a half note on B4, a quarter rest, and a half note on A4. Above the staff, a pink circle contains a Coda symbol (a stylized 'C' with a vertical line through it). The second staff begins with a pink circle containing a Coda symbol, followed by a red arrow pointing down to the Coda section below. The notes on this staff are: a half note on G4, a quarter note on A4, a quarter note on B4, a quarter note on C5, a half note on B4, a quarter note on A4, and a half note on G4. To the right of this staff, the text ***D.S. al Coda*** is written in yellow. The third staff, labeled **CODA** in bold black text, is enclosed in a large orange oval. It contains a treble clef and three notes: a half note on G4, a quarter note on A4, and a half note on G4, ending with a double bar line.



Jump to the Coda section  
and play the special  
ending **the Coda** until the  
end of the piece

Watch more videos!

★ Music Note Values!

★ Learn About the Treble Clef

★ Bass Clef Notes

★ Sharps and Flats in Music

★ DYNAMICS in Music

★ TEMPO

★ Time Signatures

★ RESTS

